

NEWS
2020
COLLECTION
UPDATE

ARKOSLIGHT®

AULIX lighting

návrhy osvětlení a prodej svítidel
inteligentní systémy, vypínače

SVĚTELNÉ STUDIO

Náměstí Na Sádkách 705
252 41 Dolní Břežany (Praha západ)

Telefon: +420 246 083 152

Mobil.: +420 702 061 783

E-mail: studio@aulix.cz

Web: www.aulix.cz

E-shop: <http://obchod.aulix.cz>

Sledujte nás také na sociálních sítích:



LIGHT&LIFE
— DESDE 1984 —

ARKOSLIGHT®

THE HOME OF LIGHT

ARKOSLIGHT HEADQUARTERS
VALENCIA · SPAIN



A NEW COLLECTION

TWO VOLUMES



The 2019 Collection

Current version of today's general catalogue. Use it to obtain the root of the updated product codes in this News 2020 catalogue. If you have not got 'The New Collection 2019', you can download it online or request it from your rep or point of sale.



News 2020 Collection Update

News 2020. With totally new products and updated luminaires. For the latter, we offer you code generators to help you make your order.

DESIGN SIGN AWARDS

2 DESIGN PLUS



FLAP
2016

LEX ECO
2012

2 GOOD DESIGN



SIX
2018



IO
2017

3 ARCHIPRODUCTS DESIGN AWARDS



ART
2019



TOP
2018



POINTER
2017

2 EUROPEAN PRODUCT DESIGN AWARD



TOP
2019



POP UP
2018

2 FX AWARD



ART
2019



PLUS
2019

1 PREMIO BIENAL IBEROAMERICANA DE DISEÑO



ZEN
2014

1 BOY AWARD



BLACK FOSTER
2019

8 IF DESIGN AWARD



RHINO
2020



BLACK FOSTER
2019



SHOT LIGHT
2017



IO
2017



FLAP
2016



SALT
2015



SLIMGOT
2014



ZEN
2014

5 RED DOT DESIGN AWARD



ART
2019



DRUM
2016



SWAP
2015



LARK-111
2014



SLIMGOT
2014

7 A'DESIGN AWARD



FLAP
2016



DRUM
2016



SPIN
2015



THOR
2015



SKY
2015



DROP
2015



ZEN
2014

7 DELTA AWARDS



POINTER
2018



SHOT LIGHT
2018 Selección



IO
2016



AURAE
2014 Selección



STRAM
2014 Selección



ZEN
2013 Selección



LEX ECO
2012 Selección

7 GERMAN DESIGN AWARD



SIX
2019



THOR
2016 Nominee



SPIN
2016 Nominee



SALT
2016 Nominee



SWAP
2016 Nominee



LARK-111
2016 Nominee



SLIMGOT
2016 Nominee

5 ICONIC AWARDS



SHOT LIGHT
2017



PUCK
2017



OLYMPIA
2017 Selection



THOR
2016



SPIN
2016

4 PREMIOS ADCV



PLUS
2019



ART
2019



IO
2017



FLAP
2017

HIGHLIGHTS

ARKOSLIGHT IS DELIGHTED TO PRESENT THE FIRM'S LATEST PRODUCT DESIGNS AND UPDATES. DISCOVER ARKOSLIGHT'S PROPOSALS BELOW, SO THAT YOUR PROJECTS REMAIN AT THE LEADING EDGE OF LIGHT CULTURE AND INDUSTRIAL DESIGN.



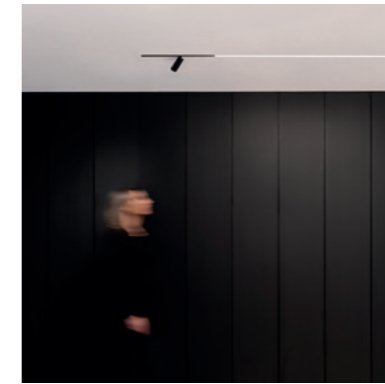
P. 010

Minimal Track
New miniaturized track system.



P. 030

Track 48V
New 48V low voltage tracks.



P. 040

New Line
Now available in three new lengths.



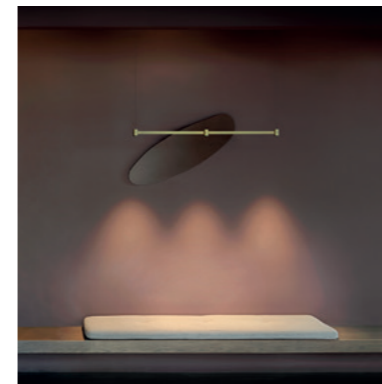
P. 042

Black Foster Spotlights
With Plus Mini, Six S and Fit 35 spotlights.



P. 048

Black Foster, now Asymmetric
'Recessed', 'Trimless' and 'Custom'.



P. 056

Art Modular
New measurements and finishing.



P. 062

Wellit
New adjustable luminaire.



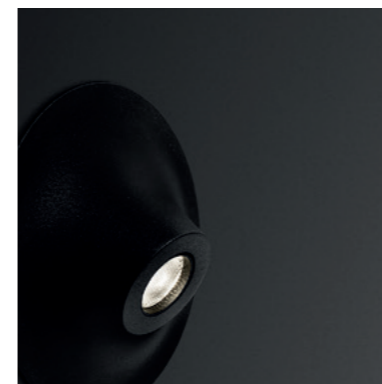
P. 068

Lex Eco Mini
The reduced size version of Lex Eco.



P. 072

Stram Surface Mini
Mini version of Stram surface.



P. 074

Rhino
Semi-recessed floor washlight.



P. 078

Wally
Floor washlight with architectural aesthetics.



P. 080

Other Updated Products
Metallic colours and more.

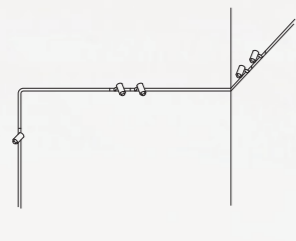


MINIMAL TRACK

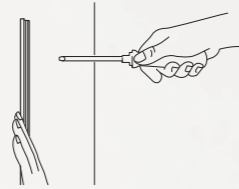
The most incredible miniaturized track system on the market.

MINIMAL TRACK INSTALLATION

1. Create your own design with Minimal Track



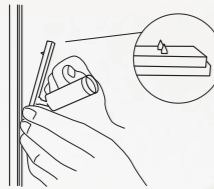
2. Fix your setting into the wall



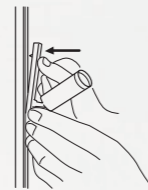
3. Electrify the entire path with the flexible rubber



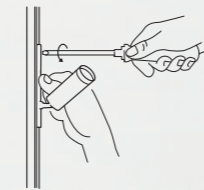
4. Place the lighting fixture from the opposite Edge of the connector



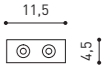
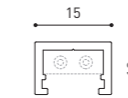
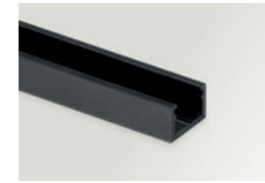
5. Push & poke it into the rubber



6. Lock it



24V SYSTEM MINIMAL TRACK



MINIMAL TRACK 24V Profile 2m

A384-02-00- | N |

MINIMAL TRACK 24V Rubber Cable n x 1m

A384-00-01- | N |

n = Total Length of System.

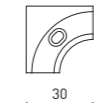


24V | Max. 4A | CE | III

MINIMAL TRACK 24V Corner 90° 1 Plane

A384-00-02- | N |

Cable Length = 35mm.



MINIMAL TRACK 24V End Cap

A384-00-05- | N |



MINIMAL TRACK 24V Corner 90° 1 Plane Rounded

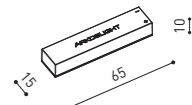
A384-00-03- | N |

Cable Length = 35mm.



MINIMAL TRACK 24V Connection Box

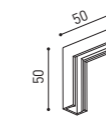
A384-00-06- | N |



MINIMAL TRACK 24V Corner 90° 2 Planes

A384-00-04- | N |

Cable Length = 100mm.



			P	V	D (A x B x C)
MINIMAL TRACK 24V Power Supply Box	ON/OFF	A384-00-07- NT	40W	24V	280 x 30 x 24mm
		A384-00-08- NT	100W	24V	280 x 30 x 24mm

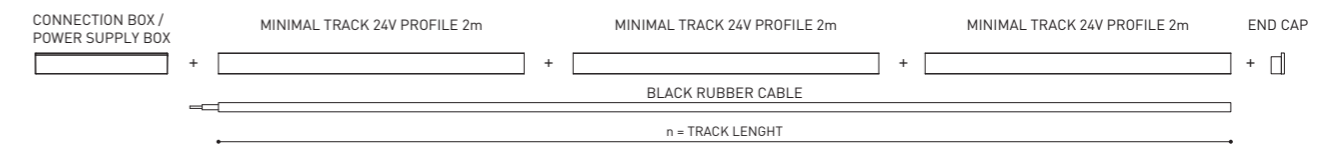
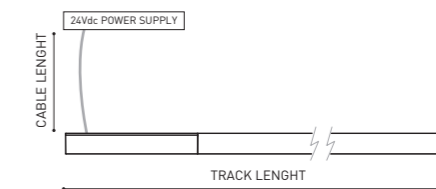
Driver must be placed adjacently to the Minimal Track 24Vdc Profile. Included ON/OFF 24Vdc Power Supply.

			P	V	D (A x B x C)
MINIMAL TRACK 24V Remote Power Supply	ON/OFF	0434-01-37	60W	24V	180 x 52 x 30mm
		0433-10-22	100W	24V	295 x 43 x 30mm

Driver must be placed on Remote. Included ON/OFF 24Vdc Power Supply.

DROP VOLTAGE TABLE

POWER (W)	CABLE SECTION (mm ²)	CABLE LENGTH (m)			
		<5	<10	<20	<30
40	0,75	30	30	30	30
	1,5	30	30	30	30
60	0,75	30	30	20	10
	1,5	30	30	30	20
100	0,75	20	10	X	X
	1,5	20	20	10	X



COLOUR | N ■ RAL 9005 | NT ■ RAL 9005 |

DIM OPTIONS PLEASE CONSULT



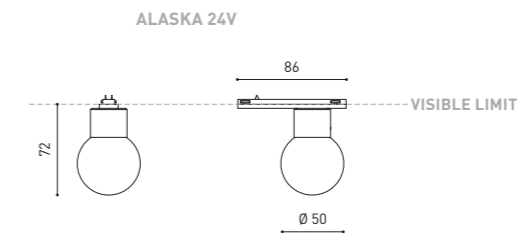


Alaska is the contemporary reinterpretation of the design of the classical incandescent filament light bulb. Alaska is composed of a solid optical glass sphere that symbolically represents the glass bulb of a traditional light bulb. Its compact body is one single piece that is manually lathed and polished like a piece of jewellery. Each one of the luminaires is traditionally produced, thus acquiring the value of an unrepeatable decorative work.



		P	CCT	I	Flux	LOR
ALASKA 24V	A385-00-00- N	3,5W	2700K	400mA	390Lm	30%
	A385-00-01- N	3,5W	3000K	400mA	410Lm	30%

LED | 24 V | CE | III | IP20 | CRI>90 | L80B10 >60.000h



COLOUR | N ■ RAL 9005 | MATERIAL | AL | OPTICAL GLASS |

» PLEASE CONSULT



Private residence (Spain) | Design: Leticia Vila & Vicente Olivares





		P	CCT	BEAM	I	Flux	LOR
SIX XS 24V	A389-00-10- WT NT	3,5W	2700K	17°	400mA	400Lm	90%
	A389-00-11- WT NT	3,5W	3000K	17°	400mA	420Lm	90%
	A389-00-12- WT NT	3,5W	4000K	17°	400mA	450Lm	90%
	A389-00-20- WT NT	3,5W	2700K	23°	400mA	400Lm	86%
	A389-00-21- WT NT	3,5W	3000K	23°	400mA	420Lm	86%
	A389-00-22- WT NT	3,5W	4000K	23°	400mA	450Lm	86%
	A389-00-30- WT NT	3,5W	2700K	34°	400mA	400Lm	88%
	A389-00-31- WT NT	3,5W	3000K	34°	400mA	420Lm	88%
	A389-00-32- WT NT	3,5W	4000K	34°	400mA	450Lm	88%

LED | 24 V | **CE** | **III** | **IP20** | CRI>90 | L80B10 >60.000h

 MacAdam Step 2

 INCL

 MINIMAL TRACK 24V

 355°

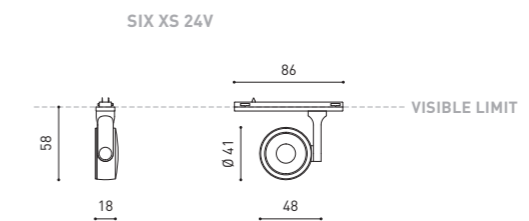
 310°

 17° / 23° / 34°

ACCESSORY

SIX High Chromatic LED*

NOT SOLD SEPARATELY



COLOUR | WT RAL 9016 | NT RAL 9005 | MATERIAL | AL | PC |

* ACCESSORY & COLOURS AFFECT THE LIGHTING PARAMETERS

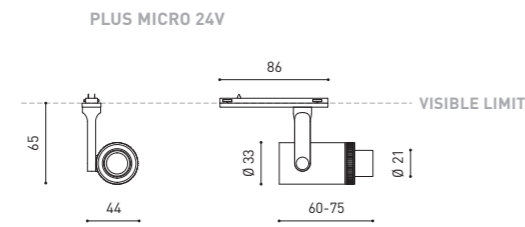
» PLEASE CONSULT



		P	CCT	BEAM	I	Flux	LOR
PLUS Micro 24V	A388-00-00- WT NT	4,7W	2700K	10-35°	400mA	500Lm	10-17%
	A388-00-01- WT NT	4,7W	3000K	10-35°	400mA	520Lm	10-17%
	A388-00-02- WT NT	4,7W	4000K	10-35°	400mA	570Lm	10-17%

LED | 24 V | CE | III | IP20 | CRI>90 | L80B10 >60.000h

MacAdam Step 2 | INCL | MINIMAL TRACK 24V | 355° | 180° | 10-35° | 10-35°



COLOUR | WT □ RAL 9016 | NT ■ RAL 9005 | MATERIAL | AL | OPTICAL PMMA |

» PLEASE CONSULT





		P	CCT	BEAM	I	Flux	LOR
iO Micro 24V	A387-00-10- WT NT	4,7W	2700K	20°	400mA	500Lm	88%
	A387-00-11- WT NT	4,7W	3000K	20°	400mA	520Lm	88%
	A387-00-12- WT NT	4,7W	4000K	20°	400mA	570Lm	88%
	A387-00-20- WT NT	4,7W	2700K	40°	400mA	500Lm	86%
	A387-00-21- WT NT	4,7W	3000K	40°	400mA	520Lm	86%
	A387-00-22- WT NT	4,7W	4000K	40°	400mA	570Lm	86%
	A387-00-30- WT NT	4,7W	2700K	54°	400mA	500Lm	86%
	A387-00-31- WT NT	4,7W	3000K	54°	400mA	520Lm	86%
	A387-00-32- WT NT	4,7W	4000K	54°	400mA	570Lm	86%

24V | IP20 | CRI>90 | L80B10 >60.000h | MacAdam Step 3 | INCL | MINIMAL TRACK 24V | 355° | 155° | 20° / 40° / 54°

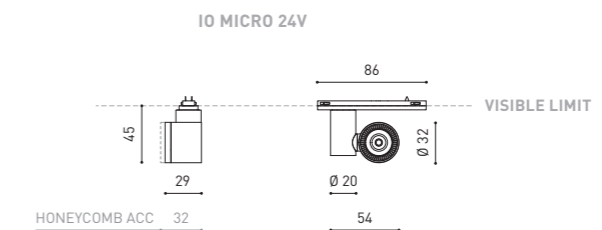
ACCESSORIES

NOT SOLD SEPARATELY

iO Micro 24V Beam Mixer Diffuser* A387-00-00



iO Micro 24V Anti-glare Honeycomb Louver* A387-00-01- | WT | NT |



COLOUR | WT RAL 9016 | NT RAL 9005 | MATERIAL | AL | PC |

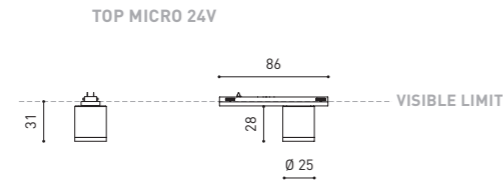
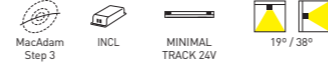
* ACCESSORY AFFECTS THE LIGHTING PARAMETERS

» PLEASE CONSULT



				P	CCT	BEAM	I	Flux	LOR
TOP Micro 24V	A383-00-10-	WT	NT	2,1W	2700K	17°	700mA	190Lm	90%
	A383-00-11-	WT	NT	2,1W	3000K	17°	700mA	210Lm	90%
	A383-00-20-	WT	NT	2,1W	2700K	35°	700mA	190Lm	92%
	A383-00-21-	WT	NT	2,1W	3000K	35°	700mA	210Lm	92%

LED | 24 V | CE | III | IP20 | CRI>90 | L80B10 >60.000h



COLOUR | WT □ RAL 9016 | NT ■ RAL 9005 | MATERIAL | AL | PC

» PLEASE CONSULT



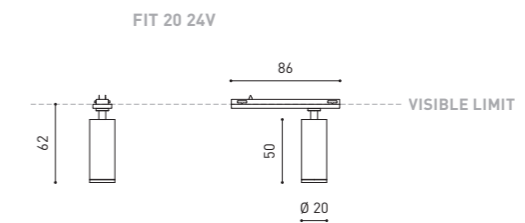
Casa en la Canyada (Spain) | Design: Ramón Esteve estudio | Photography: Héctor Rubio - Images Positive



				P	CCT	BEAM	I	Flux	LOR
FIT 20 24V	A386-00-10-	WT	NT	2,1W	2700K	12°	700mA	127Lm	87%
	A386-00-11-	WT	NT	2,1W	3000K	12°	700mA	150Lm	87%
	A386-00-20-	WT	NT	2,1W	2700K	30°	700mA	127Lm	88%
	A386-00-21-	WT	NT	2,1W	3000K	30°	700mA	150Lm	88%
	A386-00-30-	WT	NT	2,1W	2700K	54°	700mA	127Lm	81%
	A386-00-31-	WT	NT	2,1W	3000K	54°	700mA	150Lm	81%

LED | 24 V | **CE** | **III** | IP20 | CRI>90 | L80B10 >50.000 h

MacAdam Step 3 | **INCL** | **MINIMAL TRACK 24V** | 355° | 90° | 12° / 30° / 54°



COLOUR | WT □ RAL 9016 | NT ■ RAL 9005 | MATERIAL | **AL** | **PC** |

» PLEASE CONSULT

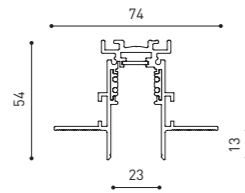
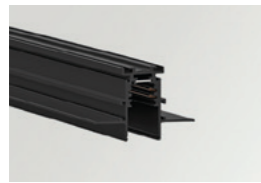


NEW

TRACK 48V

Arkoslight extends its range of 48V low voltage tracks. The Track 48V "Surface" is now available in two versions: Standard and Short, 25mm shorter (54mm vs 29mm). Track 48V "Surface Short" is designed for applications where greater integration of the track into the ceiling is required.

48V SYSTEM
TRACK 48V



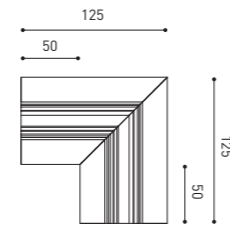
TRACK 48V TRIMLESS

TRACK 48V TRIMLESS 1m	A338-01-00-	N
TRACK 48V TRIMLESS 2m	A338-02-00-	N
TRACK 48V TRIMLESS 3m	A338-03-00-	N
TRACK 48V TRIMLESS Corner 90° One Plane	A338-06-00-	N
TRACK 48V TRIMLESS Corner 90° Two Planes	A338-07-00-	N

PLASTERBOARD CEILING, MANDATORY THICKNESS 12,5mm.
RECOMMENDED FOR INSTALLATIONS WHERE THE PROFILE CAN BE
INSTALLED BEFORE THE FALSE PLASTERBOARD CEILING.

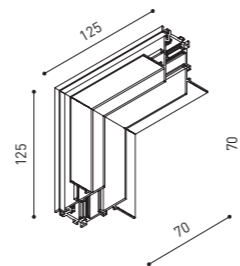


TRACK 48V TRIMLESS
Corner 90° One Plane

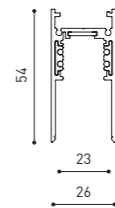


*Electrical connection not included

TRACK 48V TRIMLESS
Corner 90° Two Planes



*Electrical connection not included

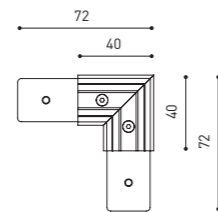


TRACK 48V SURFACE

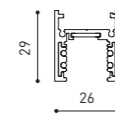
TRACK 48V SURFACE 1m	A338-11-00-	N
TRACK 48V SURFACE 2m	A338-12-00-	N
TRACK 48V SURFACE 3m	A338-13-00-	N
TRACK 48V SURFACE Corner 90° One Plane	A338-14-00-	N



TRACK 48V SURFACE
Corner 90° One Plane



*Electrical connection not included

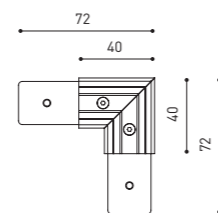


TRACK 48V SURFACE SHORT

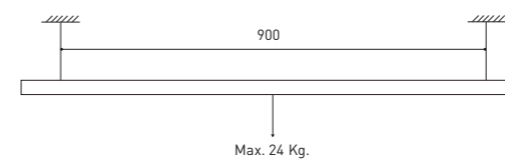
TRACK 48V SURFACE SHORT 1m	A338-21-00-	N
TRACK 48V SURFACE SHORT 2m	A338-22-00-	N
TRACK 48V SURFACE SHORT 3m	A338-23-00-	N
TRACK 48V SURFACE SHORT Corner 90° One Plane	A338-24-00-	N



TRACK 48V SURFACE SHORT
Corner 90° One Plane



*Electrical connection not included



		P	V	D
CONSTANT VOLTAGE	0434-01-21	75W	48V	180 x 52 x 30mm
LED POWER SUPPLY	0434-01-22	150W	48V	240 x 60 x 49mm

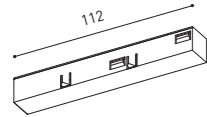
DROP VOLTAGE TABLE

POWER (W)	CABLE SECTION (mm ²)	CABLE LENGTH (m)			
		5	10	20	30
75	0,75	50	50	30	X
	1,5	50	50	50	50
150	0,75	40	15	X	X
	1,5	50	40	20	X

ACCESSORIES

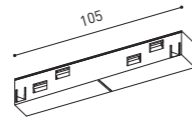
TRACK 48V

ALL 48V TRACKS



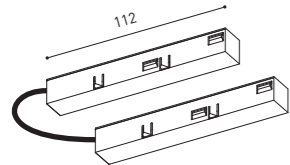
TRACK 48V Live-End Connector

A338-00-01- | N |



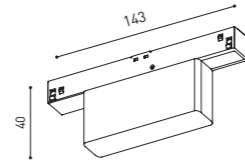
TRACK 48V Central Connector

A338-00-02- | N |



TRACK 48V Corner 90° Connector

A338-00-12- | N |



TRACK 48V Wireless Control

0434-01-31- | N | Casambi/AAG Stucchi App

0434-01-32- | N | AAG Stucchi App

TRIMLESS 48V



TRACK 48V TRIMLESS Short T-Bracket

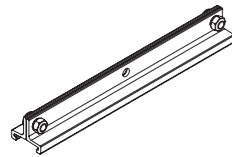
A338-00-03



TRACK 48V TRIMLESS Clamp for M6 ROD

A338-00-09

*See accessories quantities



TRACK 48V TRIMLESS Long T-Bracket

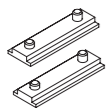
A338-00-04



TRACK 48V TRIMLESS Track Clamp

A338-00-10

*See accessories quantities



TRACK 48V TRIMLESS Straight Joiners (2 units)

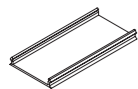
A338-00-05



TRACK 48V TRIMLESS Suspension Kit

A338-00-08

*See accessories quantities



TRACK 48V TRIMLESS Plaster Installation Guard 1m

A338-00-21

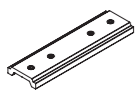
*** SUGGESTED MOUNTING ACCESSORIES QUANTITIES**

1000mm - 2 Pcs.

2000mm - 3 Pcs.

3000mm - 4 Pcs.

SURFACE, SUSPENSION, SURFACE SHORT & SUSPENSION SHORT 48V



TRACK 48V SURFACE Straight Joiner

A338-00-11- | N |

COLOUR | N ■ |

ACCESSORIES

TRACK 48V

TRIMLESS, SURFACE & SUSPENSION 48V



TRACK 48V TRIMLESS & SURFACE End

A338-00-06- | N |



TRACK 48V TRIMLESS & SURFACE End Feed

A338-00-07- | N |

SURFACE SHORT & SUSPENSION SHORT 48V



TRACK 48V SURFACE SHORT End

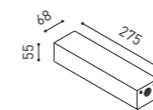
A338-00-18- | N |



TRACK 48V SURFACE SHORT End Feed

A338-00-19- | N |

SURFACE & SURFACE SHORT 48V



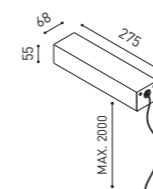
TRACK 48V Power Supply Case

A338-00-20- | N |



*To be installed aside 48V Surface Tracks
Power supply not included

SUSPENSION & SUSPENSION SHORT 48V

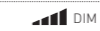


TRACK 48V Wired Power Supply Case

A338-00-22- | N |



A338-00-23- | N |



*Power supply not included



TRACK 48V SURFACE Suspension Kit (2 units)

A338-00-15- | N |



TRACK 48V SURFACE Suspension Feed Kit

A338-00-16- | N |



A338-00-17- | N |



*For remote power supply

COLOUR | N ■ |

TRACK 48V SURFACE



TRACK 48V SURFACE SHORT



TRACK 48V Products
CODE Generator Example - FIT

Reference from *The 2019 Collection*

A346 01 10 WT -S

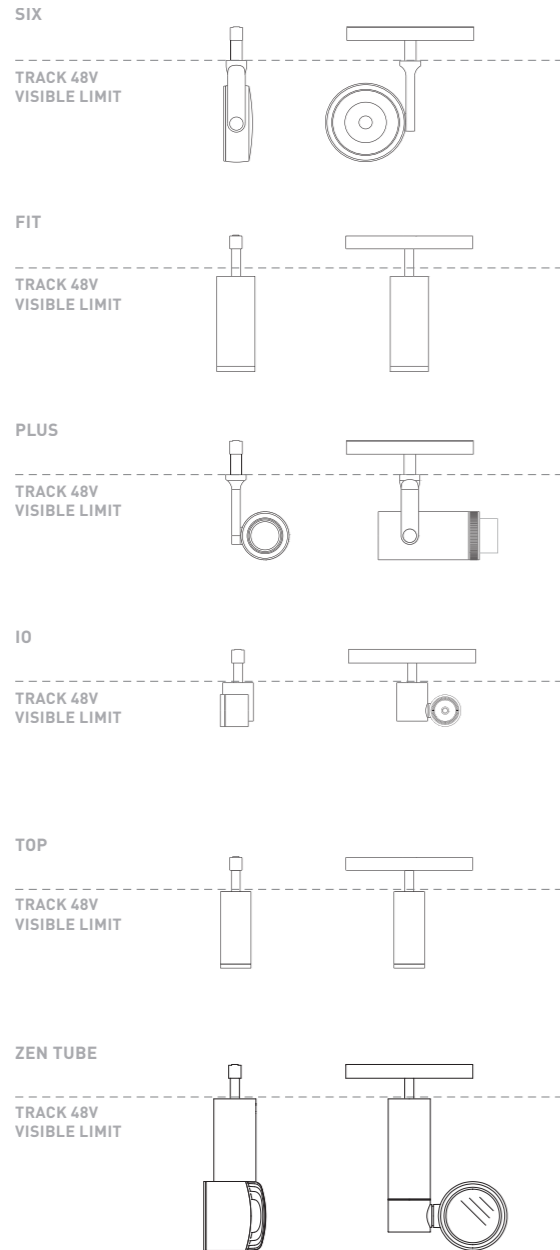
REFERENCE ENDING ADD-ON
Track 48V Surface Short

COMPATIBILITY

ACCORDING TO TYPE OF TRACK

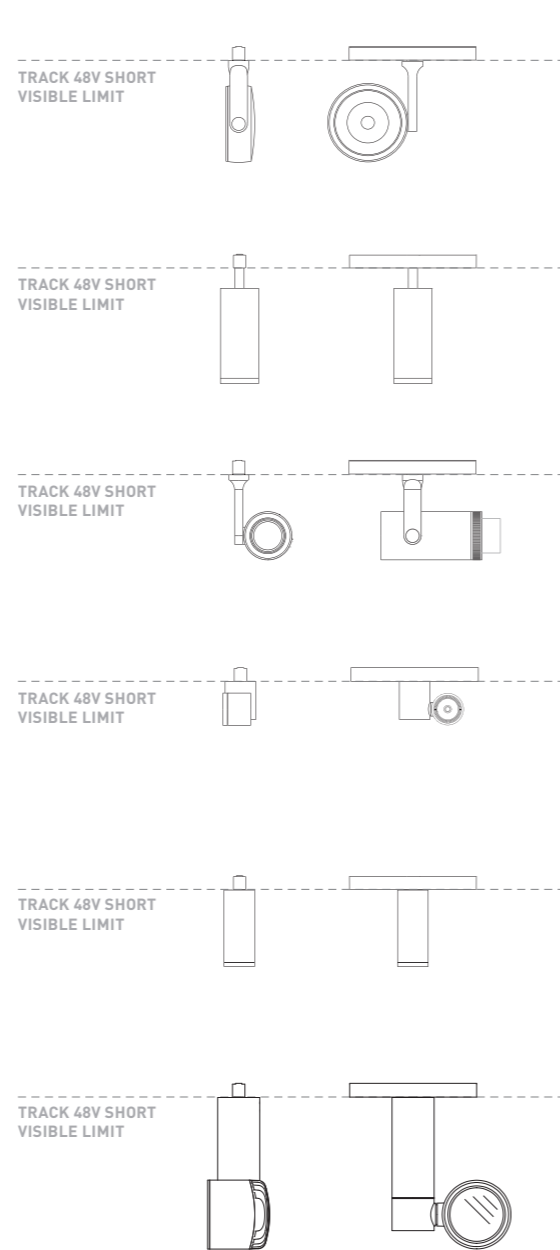
TRACK 48V

Make your order with *The 2019 Collection* codes



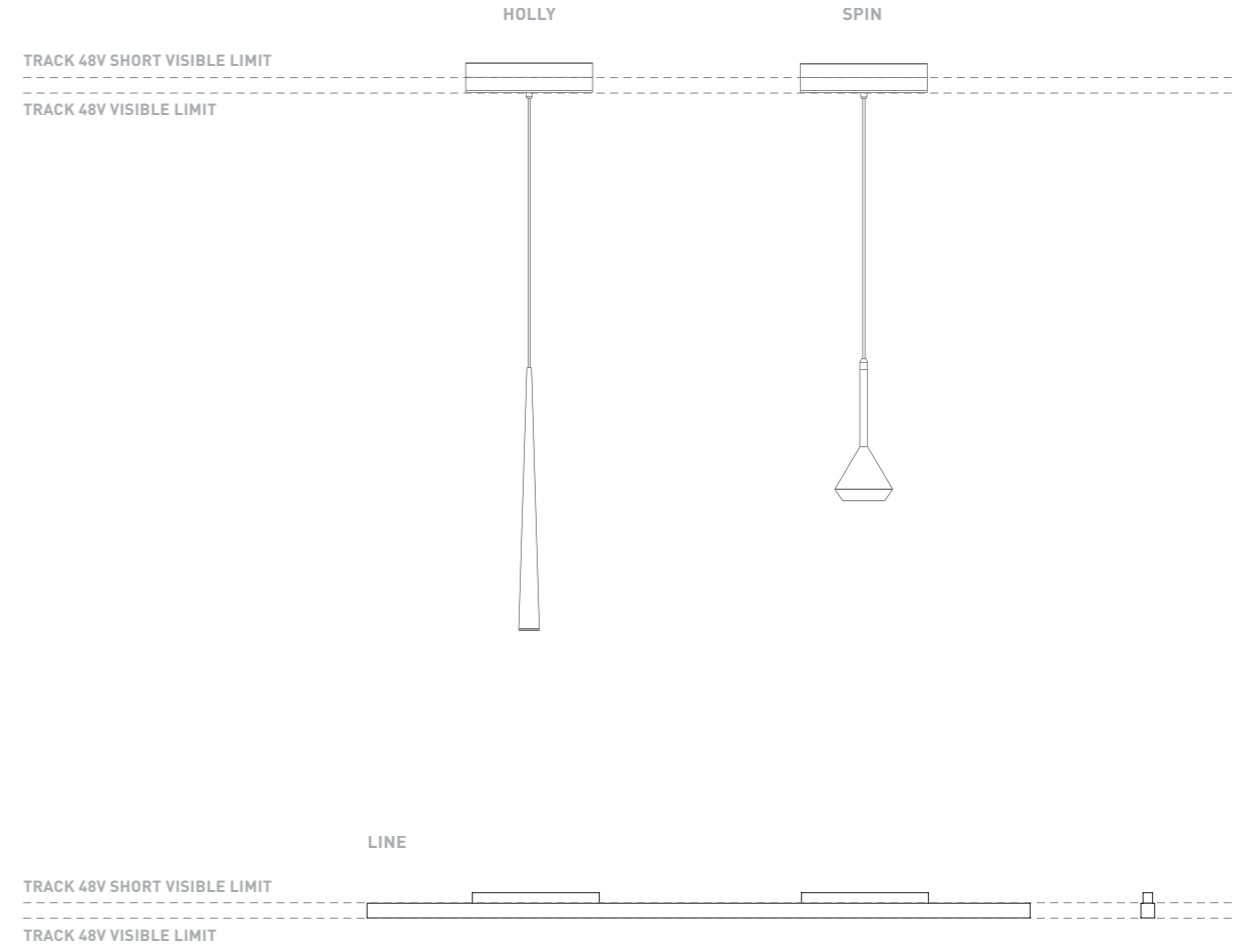
TRACK 48V SURFACE SHORT

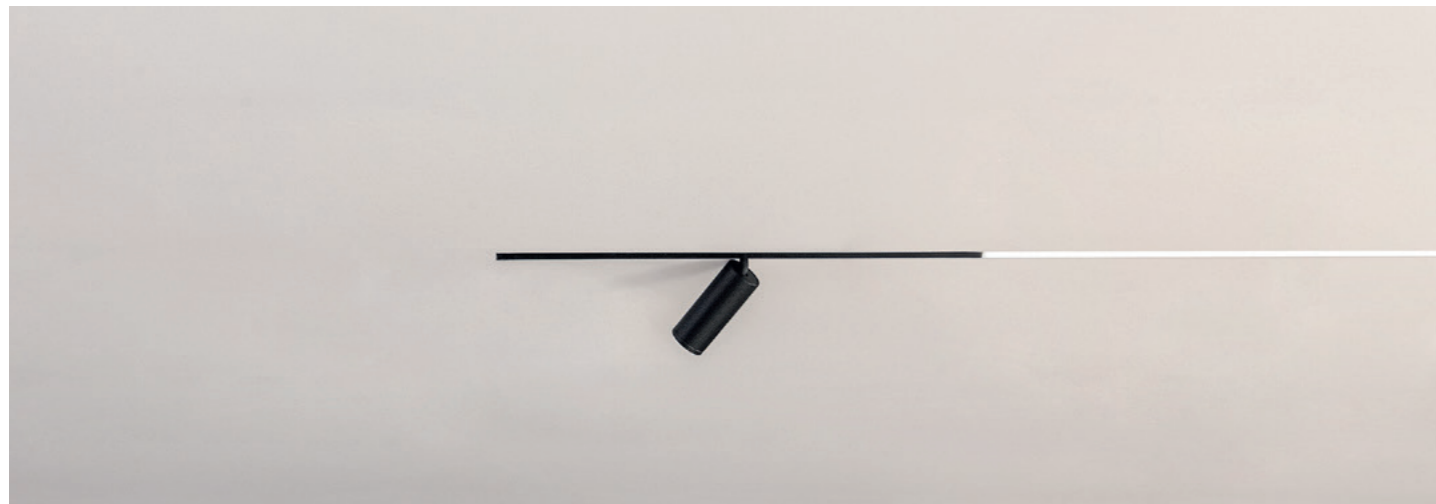
Order with *The 2019 Collection* codes + Reference Ending ADD-ON: "-S"



TRACK 48V & TRACK 48V SURFACE SHORT

Order with *The 2019 Collection* codes. Products with one single version for both tracks





NEW
LINE



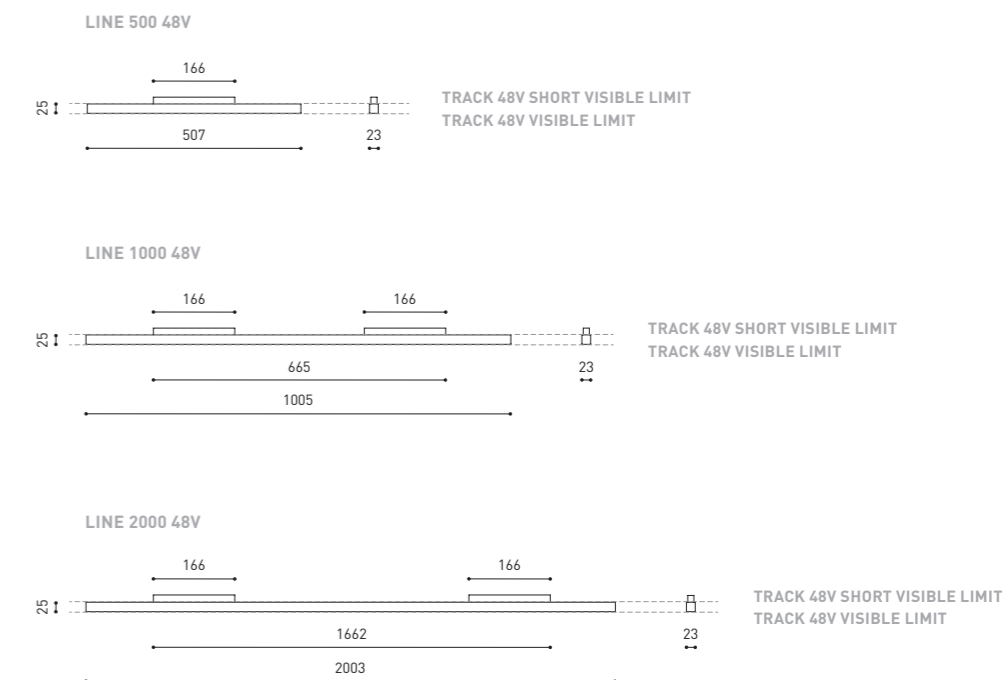
		P	CCT	I	Flux	LOR
LINE 500 48V	A376-10- Ⓞ -0- N	10,5W	2700K	350mA	1480Lm	43%
	A376-10- Ⓞ -1- N	10,5W	3000K	350mA	1600Lm	43%
LINE 1000 48V	A376-20- Ⓞ -0- N	21W	2700K	700mA	2960Lm	43%
	A376-20- Ⓞ -1- N	21W	3000K	700mA	3200Lm	43%
LINE 2000 48V	A376-30- Ⓞ -0- N	42W	2700K	700mA	5920Lm	43%
	A376-30- Ⓞ -1- N	42W	3000K	700mA	6400Lm	43%

LED | 48 V | CE | III | IP20 | CRI>90 | L80B10 >60.000 h



Ⓞ *OPTIONS

1	No DIM
2	DIM DALI



COLOUR | N ■ |

MATERIAL | AL | PC |

» PLEASE CONSULT



BLACK FOSTER

SPOTLIGHTS

Now, Black Foster combines 'The Invisible Black' effect with accent lighting, while maintaining an elegant and discrete aspect.





		P	CCT	BEAM	I	Flux	LOR
BLACK FOSTER PLUS Mini	A362-00- ① -0- WT NT	6,5W	2700K	10°-41°	700mA	630Lm	20-40%
	A362-00- ① -1- WT NT	6,5W	3000K	10°-41°	700mA	660Lm	20-40%
	A362-00- ① -2- WT NT	6,5W	4000K	10°-41°	700mA	680Lm	20-40%

LED | 220/240 V~ | **CE** | IP20 | CRI>90 | L80B10 >60.000h |
 MacAdam Step 2 | OPTIONS* | INCL | 350° | 180° | 10° - 41°



		P	CCT	BEAM	I	Flux	LOR
BLACK FOSTER FIT Ø35	A363-0- ① -10- WT NT	5,5W	2700K	19°	500mA	590Lm	82%
	A363-0- ① -11- WT NT	5,5W	3000K	19°	500mA	630Lm	82%
	A363-0- ① -20- WT NT	5,5W	2700K	29°	500mA	590Lm	80%
	A363-0- ① -21- WT NT	5,5W	3000K	29°	500mA	630Lm	80%
	A363-0- ① -30- WT NT	5,5W	2700K	38°	500mA	590Lm	80%
	A363-0- ① -31- WT NT	5,5W	3000K	38°	500mA	630Lm	80%

LED | 220/240 V~ | **CE** | IP20 | CRI>90 | L80B10 >60.000h |
 MacAdam Step 2 | OPTIONS* | INCL | 350° | 90° | 19° / 29° / 38°

① *OPTIONS

1	No DIM
2	DIM DALI

ACCESSORY

PLUS mini High Chromatic LED**

NOT SOLD SEPARATELY



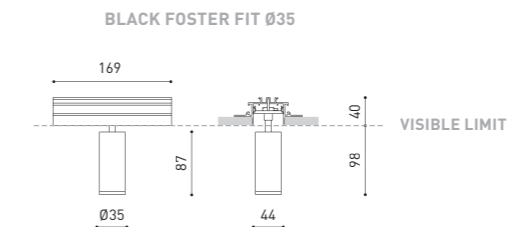
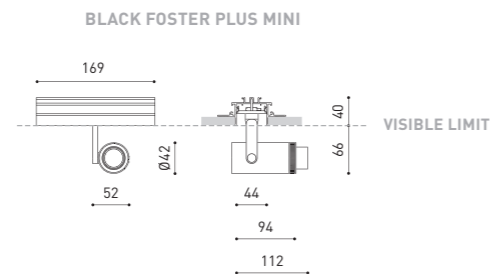
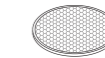
① *OPTIONS

1	No DIM
2	DIM DALI

ACCESSORY

FIT Ø35 Anti-glare Honeycomb Louver ** A345-00-00

NOT SOLD SEPARATELY



COLOUR | WT □ RAL 9016 | NT ■ RAL 9005 | MATERIAL | AL | OPTICAL PMMA | ABS+PC |

** ACCESSORY AFFECTS THE LIGHTING PARAMETERS
RECOMMENDED FOR INSTALLATIONS WHERE THE PROFILE CAN BE INSTALLED BEFORE THE FALSE PLASTERBOARD CEILING (THICKNESS 12,5mm.)



COLOUR | WT □ RAL 9016 | NT ■ RAL 9005 | MATERIAL | AL | PC | ABS+PC |

** ACCESSORY AFFECTS THE LIGHTING PARAMETERS
RECOMMENDED FOR INSTALLATIONS WHERE THE PROFILE CAN BE INSTALLED BEFORE THE FALSE PLASTERBOARD CEILING (THICKNESS 12,5mm.)





The Black Foster Custom system increases its possibilities with new Plus Mini, Six S and Fit 35 spotlights.

In addition to the aforementioned spotlights, Fit 20 Double, Fit 20, iO, Six M, Six XS and Six XS Double, for the Black Foster Custom system, are available on demand.



		P	CCT	BEAM	I	Flux	LOR
BLACK FOSTER SIX S	A360-0- Ⓞ -10- WT NT	8,5W	2700K	17°	500mA	1030Lm	86%
	A360-0- Ⓞ -11- WT NT	8,5W	3000K	17°	500mA	1070Lm	86%
	A360-0- Ⓞ -12- WT NT	8,5W	4000K	17°	500mA	1100Lm	86%
	A360-0- Ⓞ -20- WT NT	8,5W	2700K	24°	500mA	1030Lm	84%
	A360-0- Ⓞ -21- WT NT	8,5W	3000K	24°	500mA	1070Lm	84%
	A360-0- Ⓞ -22- WT NT	8,5W	4000K	24°	500mA	1100Lm	84%
	A360-0- Ⓞ -30- WT NT	8,5W	2700K	34°	500mA	1030Lm	89%
	A360-0- Ⓞ -31- WT NT	8,5W	3000K	34°	500mA	1070Lm	89%
	A360-0- Ⓞ -32- WT NT	8,5W	4000K	34°	500mA	1100Lm	89%

LED | 220/240 V~ | **CE** | IP20 | CRI>90 | L80B10 >60.000h
 MacAdam Step 2
OPTIONS*
INCL
350°
310°
17°/24°/34°

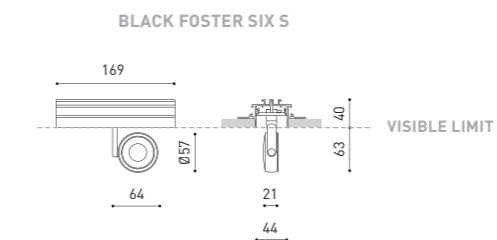
Ⓞ *OPTIONS

1	No DIM
2	DIM DALI

ACCESSORY

SIX S High Chromatic LED**

NOT SOLD SEPARATELY



COLOUR | WT □ RAL 9016 | NT ■ RAL 9005 | MATERIAL | AL | PC | ABS+PC |

** ACCESSORY & COLOURS AFFECT THE LIGHTING PARAMETERS
RECOMMENDED FOR INSTALLATIONS WHERE THE PROFILE CAN BE INSTALLED BEFORE THE FALSE PLASTERBOARD CEILING (THICKNESS 12,5mm.)





BLACK FOSTER

NOW ASYMMETRIC

Black Foster is now available with asymmetric light emission in its Recessed, Trimless and Custom variants.





Ⓞ	*OPTIONS
1	No DIM
2	DIM Push
4	DIM DALI

BLACK FOSTER ASYMMETRIC RECESSED

		P	CCT	I	Flux	LOR
BLACK FOSTER ASYMMETRIC Recessed 2	A374-20- Ⓞ -0- N WN	4,2W	2700K	700mA	380Lm	90%
	A374-20- Ⓞ -1- N WN	4,2W	3000K	700mA	420Lm	90%
	A374-20- Ⓞ -2- N WN	4,2W	4000K	700mA	500Lm	90%

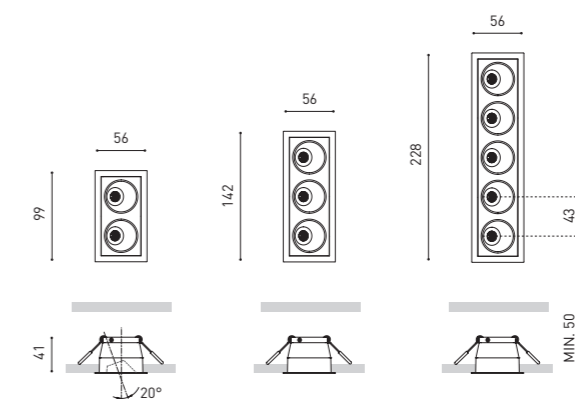
LED | 220 V~ | CE | IP20 | CRI>90 | L80B10 >60.000h |
 MacAdam Step 3 | OPTIONS* | CONNEX | INCL | 50 X 93 | 38°

		P	CCT	I	Flux	LOR
BLACK FOSTER ASYMMETRIC Recessed 3	A374-30- Ⓞ -0- N WN	6,3W	2700K	700mA	570Lm	90%
	A374-30- Ⓞ -1- N WN	6,3W	3000K	700mA	630Lm	90%
	A374-30- Ⓞ -2- N WN	6,3W	4000K	700mA	750Lm	90%

LED | 220 V~ | CE | IP20 | CRI>90 | L80B10 >60.000h |
 MacAdam Step 3 | OPTIONS* | CONNEX | INCL | 50 X 136 | 38°

		P	CCT	I	Flux	LOR
BLACK FOSTER ASYMMETRIC Recessed 5	A374-40- Ⓞ -0- N WN	10,5W	2700K	700mA	950Lm	90%
	A374-40- Ⓞ -1- N WN	10,5W	3000K	700mA	1050Lm	90%
	A374-40- Ⓞ -2- N WN	10,5W	4000K	700mA	1250Lm	90%

LED | 220 V~ | CE | IP20 | CRI>90 | L80B10 >60.000h |
 MacAdam Step 3 | OPTIONS* | CONNEX | INCL | 50 X 222 | 38°



COLOUR | N ■ RAL 9005 | WN ■ RAL 9016 | RAL 9005 | MATERIAL | AL | ABS+PC |

& » PLEASE CONSULT

BLACK FOSTER ASYMMETRIC TRIMLESS



		P	CCT	I	Flux	LOR
BLACK FOSTER ASYMMETRIC Trimless 2	A373-20- 00 -0- N	4,2W	2700K	700mA	380Lm	90%
	A373-20- 00 -1- N	4,2W	3000K	700mA	420Lm	90%
	A373-20- 00 -2- N	4,2W	4000K	700mA	500Lm	90%

LED | 220 V~ | 240 | CE | IP20 | CRI>90 | L80B10 >60.000h

MacAdam Step 3 | OPTIONS* | CONNEC | INCL | 50 X 93 | 38°



		P	CCT	I	Flux	LOR
BLACK FOSTER ASYMMETRIC Trimless 3	A373-30- 00 -0- N	6,3W	2700K	700mA	570Lm	90%
	A373-30- 00 -1- N	6,3W	3000K	700mA	630Lm	90%
	A373-30- 00 -2- N	6,3W	4000K	700mA	750Lm	90%

LED | 220 V~ | 240 | CE | IP20 | CRI>90 | L80B10 >60.000h

MacAdam Step 3 | OPTIONS* | CONNEC | INCL | 50 X 136 | 38°



		P	CCT	I	Flux	LOR
BLACK FOSTER ASYMMETRIC Trimless 5	A373-40- 00 -0- N	10,5W	2700K	700mA	950Lm	90%
	A373-40- 00 -1- N	10,5W	3000K	700mA	1050Lm	90%
	A373-40- 00 -2- N	10,5W	4000K	700mA	1250Lm	90%

LED | 220 V~ | 240 | CE | IP20 | CRI>90 | L80B10 >60.000h

MacAdam Step 3 | OPTIONS* | CONNEC | INCL | 50 X 222 | 38°

00 *OPTIONS

1	No DIM
2	DIM Push
4	DIM DALI

COLOUR | N ■ RAL 9005 | MATERIAL | AL | ABS+PC

RECOMMENDED FOR INSTALLATIONS WHERE THE PROFILE CAN BE INSTALLED BEFORE THE FALSE PLASTERBOARD CEILING (THICKNESS 12,5mm.)



		P	CCT	I	Flux	LOR
BLACK FOSTER ASYMMETRIC Trimless 10	A373-50- 00 -0- N	21W	2700K	700mA	1900Lm	90%
	A373-50- 00 -1- N	21W	3000K	700mA	2100Lm	90%
	A373-50- 00 -2- N	21W	4000K	700mA	2500Lm	90%

LED | 220 V~ | 240 | CE | IP20 | CRI>90 | L80B10 >60.000h

MacAdam Step 3 | OPTIONS* | CONNEC | INCL | 50 X 437 | 38°



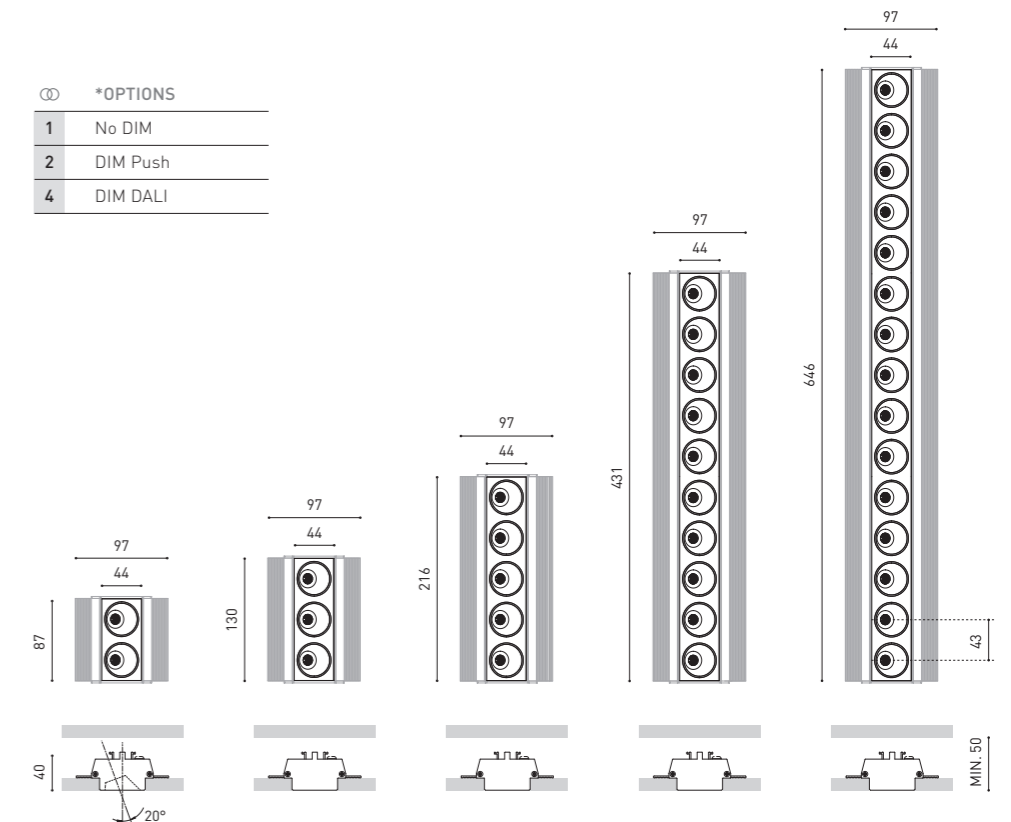
		P	CCT	I	Flux	LOR
BLACK FOSTER ASYMMETRIC Trimless 15	A373-60- 00 -0- N	31,5W	2700K	700mA	2850Lm	90%
	A373-60- 00 -1- N	31,5W	3000K	700mA	3150Lm	90%
	A373-60- 00 -2- N	31,5W	4000K	700mA	3750Lm	90%

LED | 220 V~ | 240 | CE | IP20 | CRI>90 | L80B10 >60.000h

MacAdam Step 3 | OPTIONS* | CONNEC | INCL | 50 X 652 | 38°

00 *OPTIONS

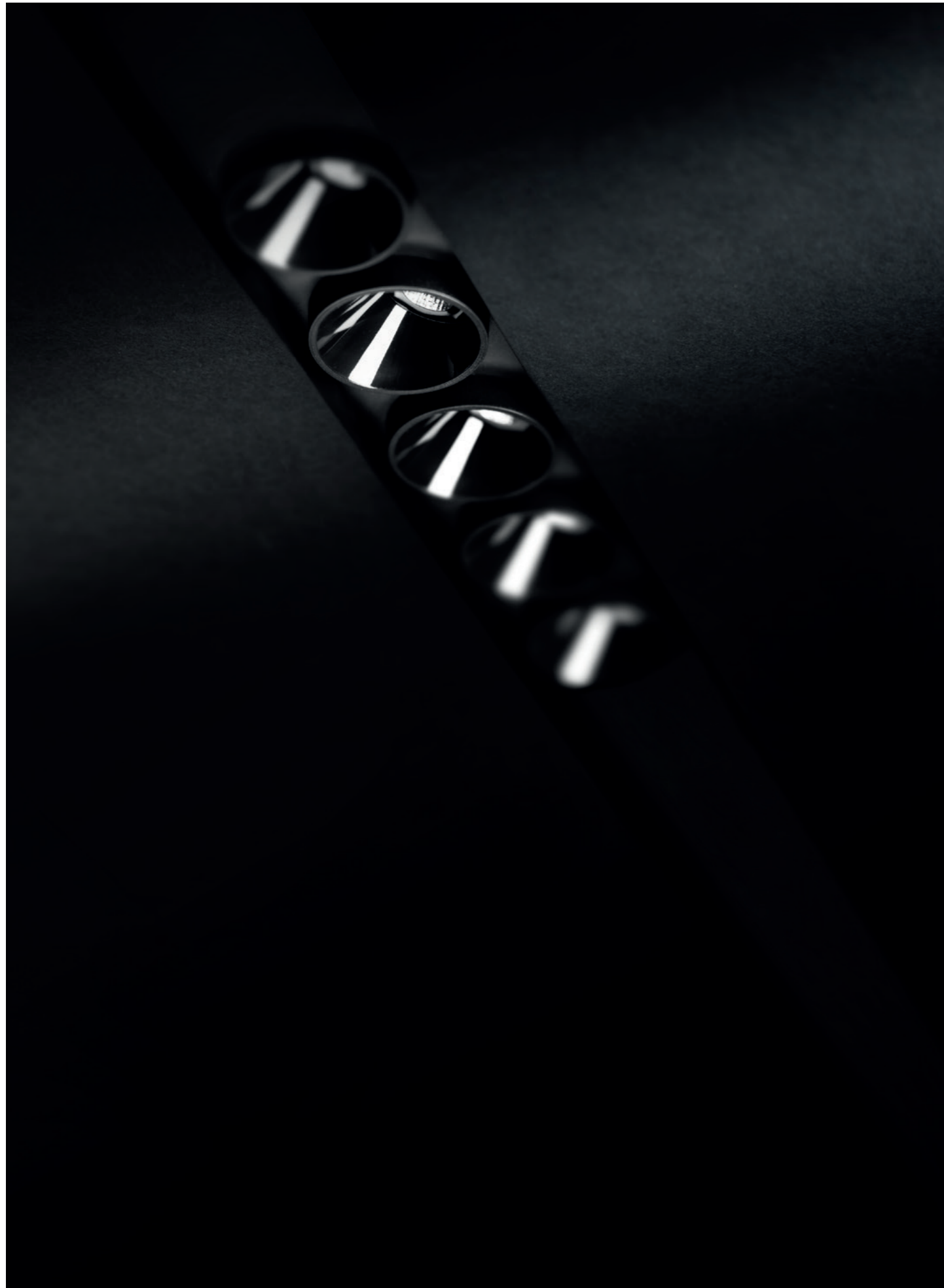
1	No DIM
2	DIM Push
4	DIM DALI



COLOUR | N ■ RAL 9005 | MATERIAL | AL | ABS+PC

RECOMMENDED FOR INSTALLATIONS WHERE THE PROFILE CAN BE INSTALLED BEFORE THE FALSE PLASTERBOARD CEILING (THICKNESS 12,5mm.)

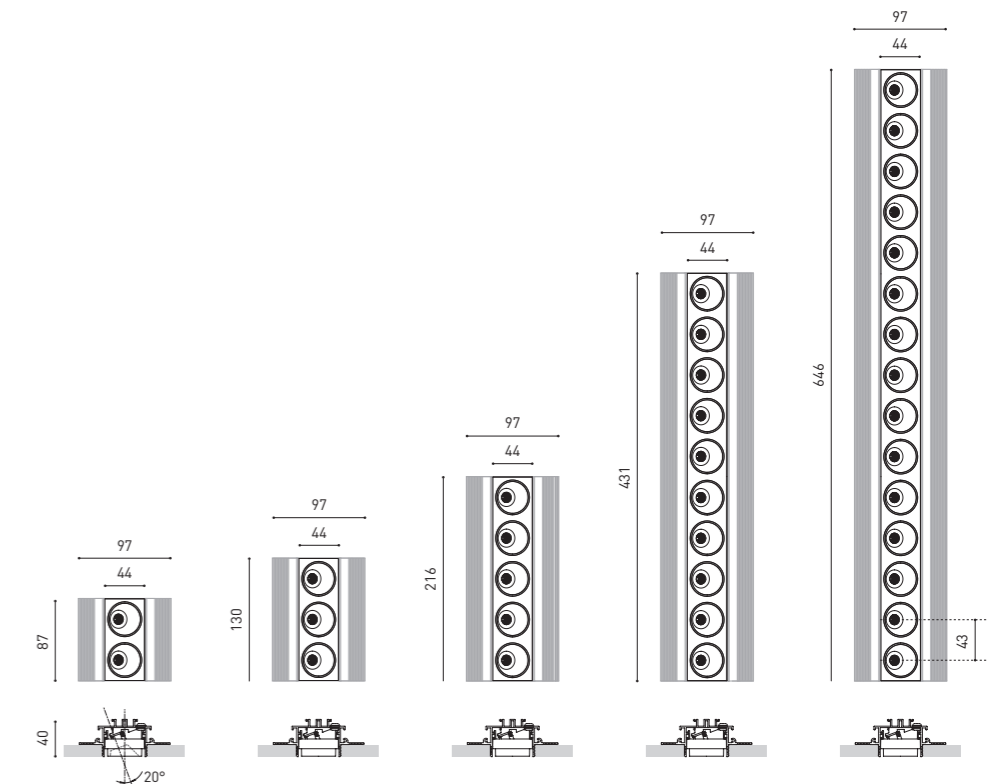




BLACK FOSTER ASYMMETRIC CUSTOM

		P	CCT	I	Flux	LOR	L
BLACK FOSTER ASYMMETRIC Custom 2	A372-20-00- N	4,2W	2700K	700mA	380Lm	90%	87mm
	A372-20-01- N	4,2W	3000K	700mA	420Lm	90%	87mm
	A372-20-02- N	4,2W	4000K	700mA	500Lm	90%	87mm
BLACK FOSTER ASYMMETRIC Custom 3	A372-30-00- N	6,3W	2700K	700mA	570Lm	90%	130mm
	A372-30-01- N	6,3W	3000K	700mA	630Lm	90%	130mm
	A372-30-02- N	6,3W	4000K	700mA	750Lm	90%	130mm
BLACK FOSTER ASYMMETRIC Custom 5	A372-40-00- N	10,5W	2700K	700mA	950Lm	90%	216mm
	A372-40-01- N	10,5W	3000K	700mA	1050Lm	90%	216mm
	A372-40-02- N	10,5W	4000K	700mA	1250Lm	90%	216mm
BLACK FOSTER ASYMMETRIC Custom 10	A372-50-00- N	21W	2700K	700mA	1900Lm	90%	431mm
	A372-50-01- N	21W	3000K	700mA	2100Lm	90%	431mm
	A372-50-02- N	21W	4000K	700mA	2500Lm	90%	431mm
BLACK FOSTER ASYMMETRIC Custom 15	A372-60-00- N	31,5W	2700K	700mA	2850Lm	90%	646mm
	A372-60-01- N	31,5W	3000K	700mA	3150Lm	90%	646mm
	A372-60-02- N	31,5W	4000K	700mA	3750Lm	90%	646mm

LED | CE | III | IP20 | CRI>90 | L80B10 >60.000h



COLOUR | N ■ RAL 9005 | MATERIAL | AL | ABS+PC

PLASTERBOARD CEILING, MANDATORY THICKNESS 12,5mm. RECOMMENDED FOR INSTALLATIONS WHERE THE PROFILE CAN BE INSTALLED BEFORE THE FALSE PLASTERBOARD CEILING.

» PLEASE CONSULT

ART MODULAR

Available on demand, there are three versions of *Art Modular* (with 3, 4 and 5 equidistant light points). The intermediate light points can be configured to be able to create *Direct & Indirect* pieces.

BRASSA DE MAR
RICE CLUB



reddot design award
winner 2019



archiproducts
DESIGN AWARDS
WINNER 2019



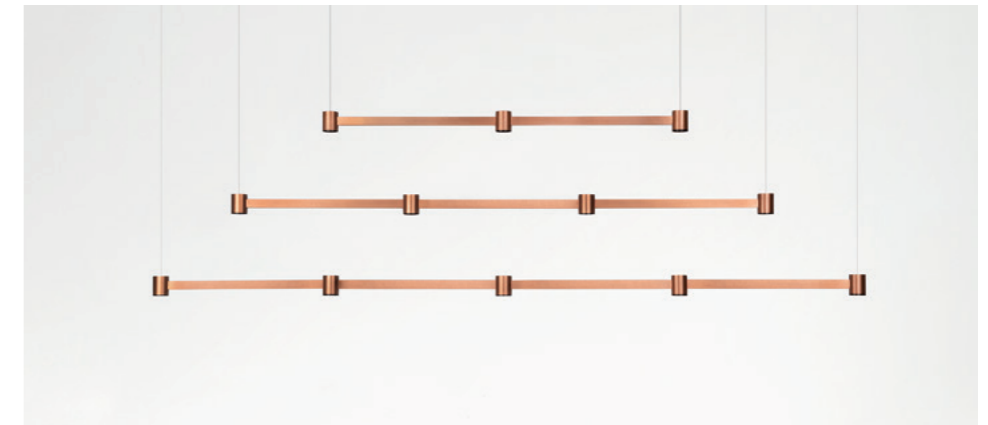
FX
INTERNATIONAL DESIGN AWARDS
SHORTLIST
2019



Bronze Delta
ADI Awards 2020



PREMIO
ADCV 2019
PLATA



		P	CCT	I	Flux	LOR
ART Modular 3	WT NT BC BG	6,3W	2700K	700mA	570Lm	92%
	WT NT BC BG	6,3W	3000K	700mA	630Lm	92%
	WT NT BC BG	6,3W	2700K	700mA	570Lm	92%
	WT NT BC BG	6,3W	3000K	700mA	630Lm	92%
ART Modular 4	WT NT BC BG	8,4W	2700K	700mA	760Lm	92%
	WT NT BC BG	8,4W	3000K	700mA	840Lm	92%
	WT NT BC BG	8,4W	2700K	700mA	760Lm	92%
	WT NT BC BG	8,4W	3000K	700mA	840Lm	92%
ART Modular 5	WT NT BC BG	10,5W	2700K	700mA	950Lm	92%
	WT NT BC BG	10,5W	3000K	700mA	1050Lm	92%
	WT NT BC BG	10,5W	2700K	700mA	950Lm	92%
	WT NT BC BG	10,5W	3000K	700mA	1050Lm	92%

| 220 V~ | | | IP20 | CRI>90 | L80B10 >60.000h

 | MacAdam Step 3
 | INCL
 | 2 X Ø50
 | UGR <19
 | 38°
 | 38°

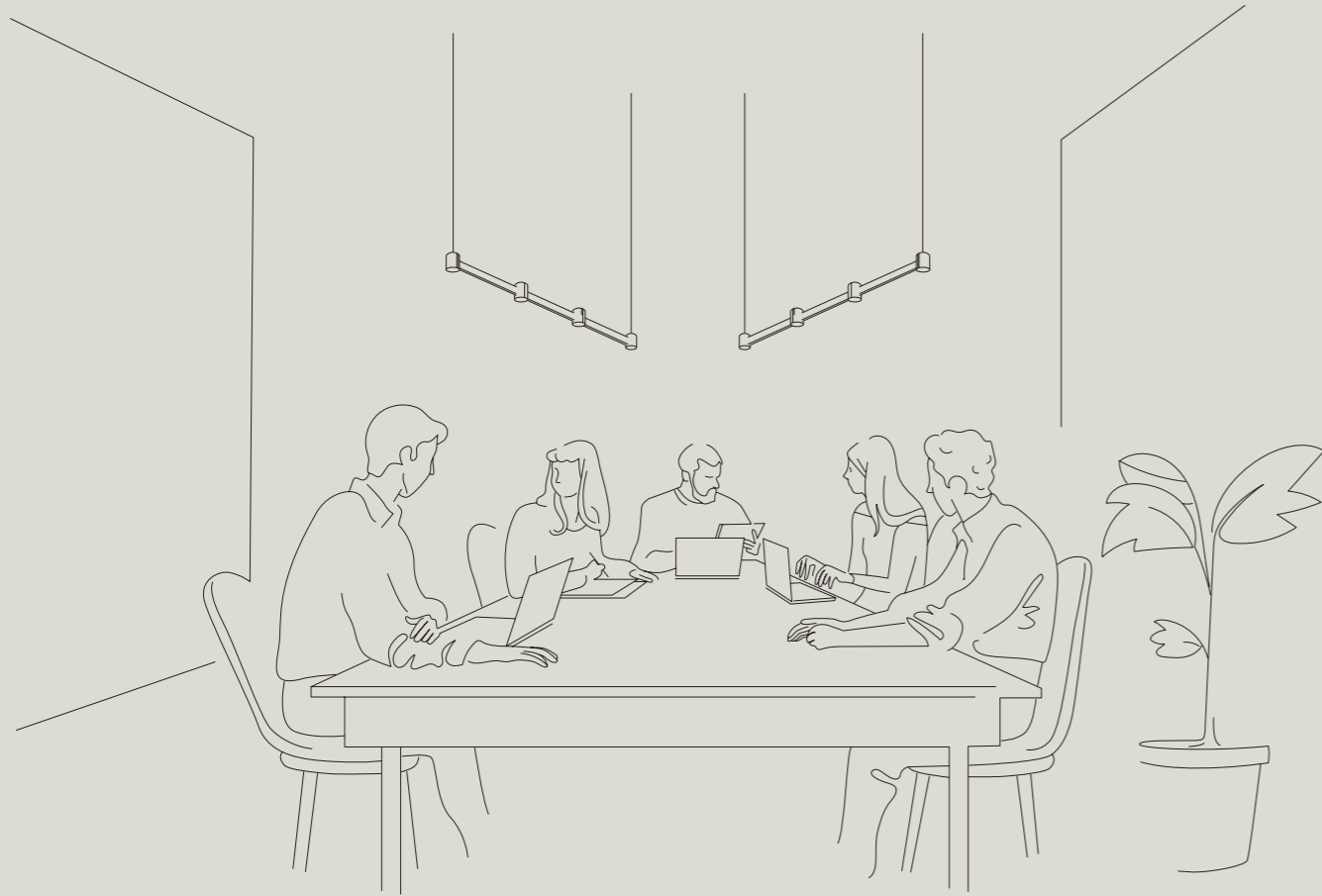
FINISHING**	Lamp	Base
	WT	WT
	NT	NT
	BC	WT
	BG	WT

COLOUR | WT RAL 9016 | NT RAL 9005 | BC | BG | MATERIAL | BR | ABS+PC |

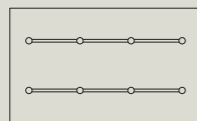
OTHER CCT | * OTHER DIM OPTIONS | ** OTHER FINISHING COMBINATIONS » PLEASE CONSULT

» PLEASE CONSULT

ART MODULAR. OVER TABLE



150 x 90 cm.

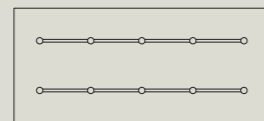


1520 | 1680 Lm



2280 | 2520 Lm

200 x 90 cm.

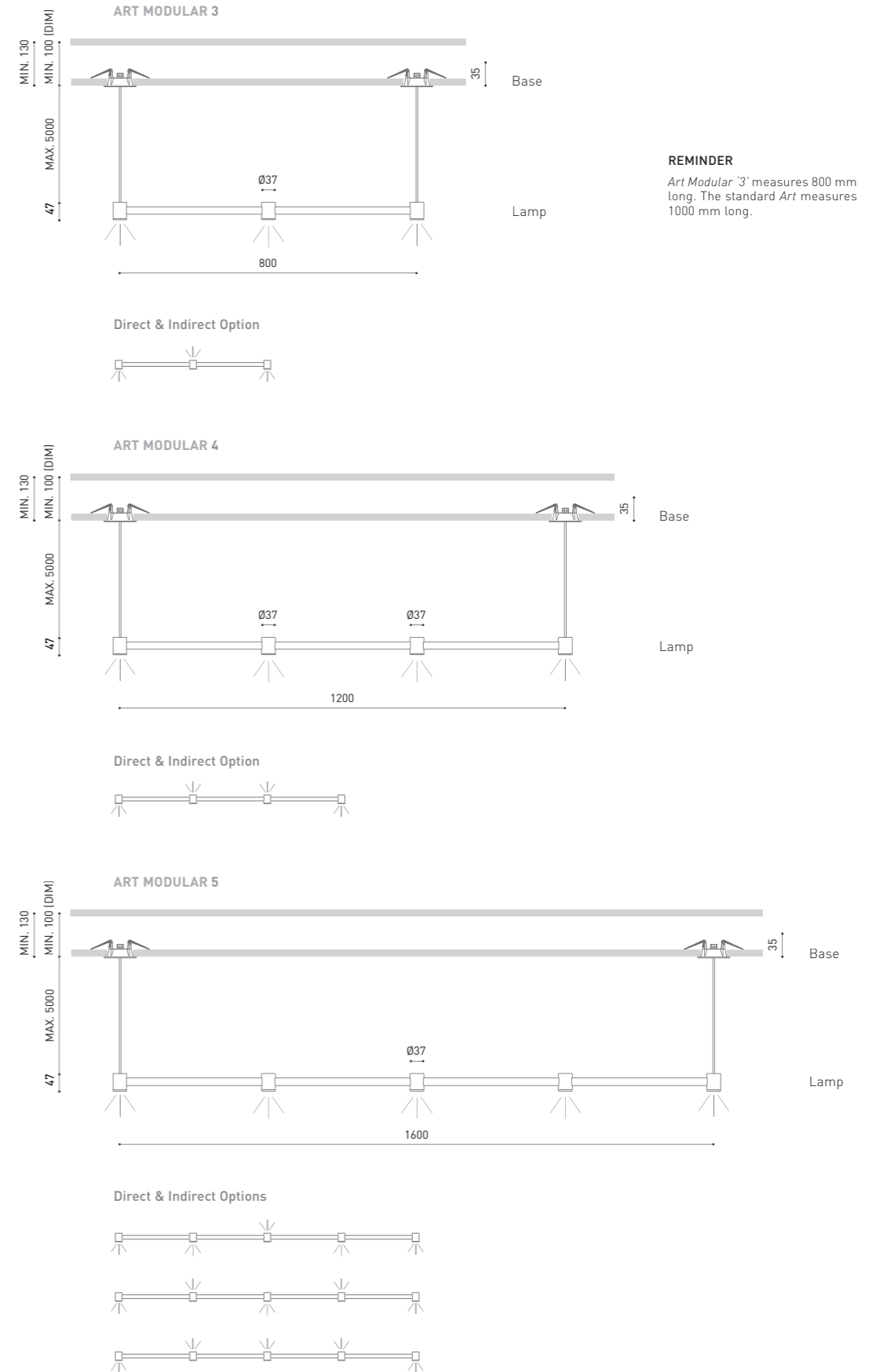


1900 | 2100 Lm



2850 | 3150 Lm

ART MODULAR DISTRIBUTION SUGGESTIONS FOR STANDARD-SIZED TABLES.



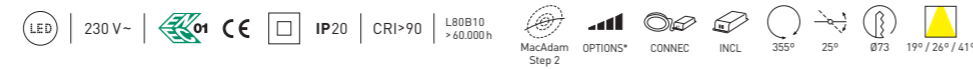


WELLIT

Wellit is an adjustable luminaire, with three sizes, designed for retail and contract lighting applications. Efficiency, technical features and visual order.



		P	CCT	BEAM	I	Flux	LOR
WELLIT S1	A380-11-11- WT NT	5W	3000K	19°	150mA	700Lm	80%
	A380-11-12- WT NT	5W	4000K	19°	150mA	710Lm	80%
	A380-11-21- WT NT	5W	3000K	26°	150mA	700Lm	89%
	A380-11-22- WT NT	5W	4000K	26°	150mA	710Lm	89%
	A380-11-31- WT NT	5W	3000K	41°	150mA	700Lm	84%
	A380-11-32- WT NT	5W	4000K	41°	150mA	710Lm	84%
WELLIT S2	A380-2- Ⓞ -11- WT NT	7W	3000K	19°	200mA	940Lm	80%
	A380-2- Ⓞ -12- WT NT	7W	4000K	19°	200mA	960Lm	80%
	A380-2- Ⓞ -21- WT NT	7W	3000K	26°	200mA	940Lm	89%
	A380-2- Ⓞ -22- WT NT	7W	4000K	26°	200mA	960Lm	89%
	A380-2- Ⓞ -31- WT NT	7W	3000K	41°	200mA	940Lm	84%
	A380-2- Ⓞ -32- WT NT	7W	4000K	41°	200mA	960Lm	84%



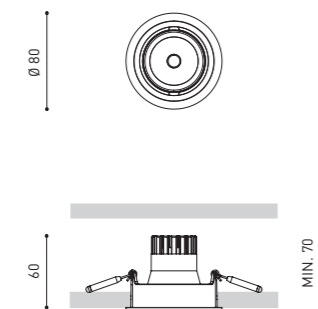
Ⓞ	*OPTIONS
1	No DIM
2	DIM DALI
3	DIM Push

ACCESSORY

WELLIT S Anti-glare Honeycomb Louver ** A380-00-00
NOT SOLD SEPARATELY



WELLIT S



COLOUR | WT □ RAL 9016 | NT ■ RAL 9005 | MATERIAL | AL | PC |

** ACCESSORY AFFECTS THE LIGHTING PARAMETERS



		P	CCT	BEAM	I	Flux	LOR
WELLIT M1	A381-11-11- WT NT	8W	3000K	19°	250mA	1190Lm	81%
	A381-11-12- WT NT	8W	4000K	19°	250mA	1210Lm	81%
	A381-11-21- WT NT	8W	3000K	24°	250mA	1190Lm	83%
	A381-11-22- WT NT	8W	4000K	24°	250mA	1210Lm	83%
	A381-11-31- WT NT	8W	3000K	39°	250mA	1190Lm	83%
	A381-11-32- WT NT	8W	4000K	39°	250mA	1210Lm	83%
WELLIT M2	A381-2- Ⓞ -11- WT NT	15W	3000K	19°	450mA	1970Lm	81%
	A381-2- Ⓞ -12- WT NT	15W	4000K	19°	450mA	2000Lm	81%
	A381-2- Ⓞ -21- WT NT	15W	3000K	24°	450mA	1970Lm	83%
	A381-2- Ⓞ -22- WT NT	15W	4000K	24°	450mA	2000Lm	83%
	A381-2- Ⓞ -31- WT NT	15W	3000K	39°	450mA	1970Lm	83%
	A381-2- Ⓞ -32- WT NT	15W	4000K	39°	450mA	2000Lm	83%



		P	CCT	BEAM	I	Flux	LOR
WELLIT M Tunable White	A381-02-18- WT NT	10,5W	2700-5000K	14°	600mA	1250Lm	83%
	A381-02-28- WT NT	10,5W	2700-5000K	20°	600mA	1250Lm	82%
	A381-02-38- WT NT	10,5W	2700-5000K	34°	600mA	1250Lm	80%



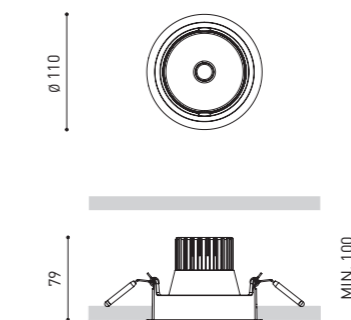
Ⓞ	*OPTIONS
1	No DIM
2	DIM DALI
3	DIM Push

ACCESSORY

WELLIT M Anti-glare Honeycomb Louver *** A381-00-00
NOT SOLD SEPARATELY



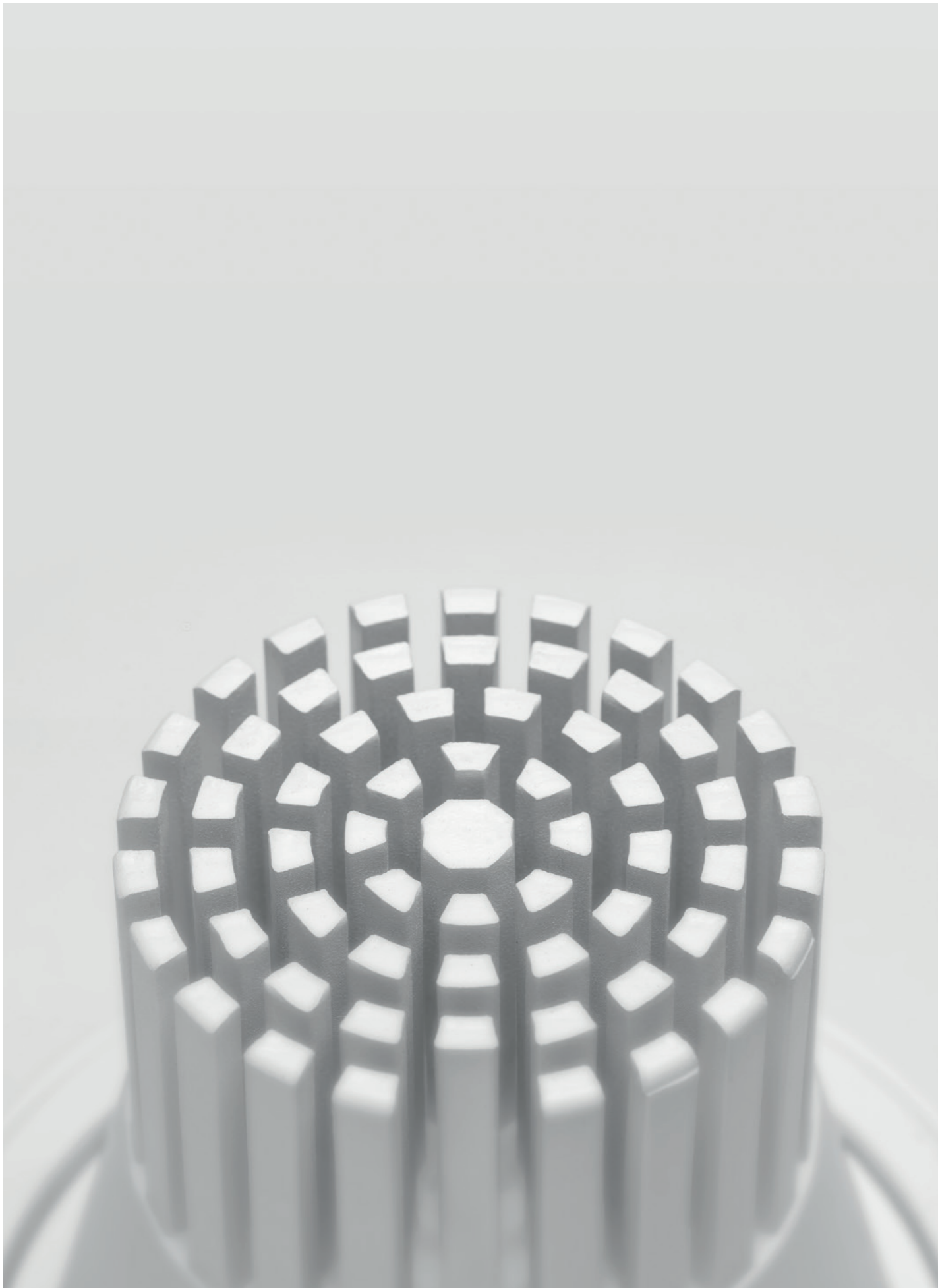
WELLIT M



COLOUR | WT □ RAL 9016 | NT ■ RAL 9005 | MATERIAL | AL | PC |

** DIM OPTIONS PLEASE CONSULT | *** ACCESSORY AFFECTS THE LIGHTING PARAMETERS





			P	CCT	BEAM	I	Flux	LOR
WELLIT L1	A382 -11-11-	WT NT	15W	3000K	14°	450mA	2060Lm	90%
	A382 -11-12-	WT NT	15W	4000K	14°	450mA	2100Lm	90%
	A382 -11-21-	WT NT	15W	3000K	22°	450mA	2060Lm	91%
	A382 -11-22-	WT NT	15W	4000K	22°	450mA	2100Lm	91%
	A382 -11-31-	WT NT	15W	3000K	42°	450mA	2060Lm	91%
	A382 -11-32-	WT NT	15W	4000K	42°	450mA	2100Lm	91%
WELLIT L2	A382 -2- ∞ -11-	WT NT	25W	3000K	14°	700mA	2960Lm	90%
	A382 -2- ∞ -12-	WT NT	25W	4000K	14°	700mA	3000Lm	90%
	A382 -2- ∞ -21-	WT NT	25W	3000K	22°	700mA	2960Lm	91%
	A382 -2- ∞ -22-	WT NT	25W	4000K	22°	700mA	3000Lm	91%
	A382 -2- ∞ -31-	WT NT	25W	3000K	42°	700mA	2960Lm	91%
	A382 -2- ∞ -32-	WT NT	25W	4000K	42°	700mA	3000Lm	91%



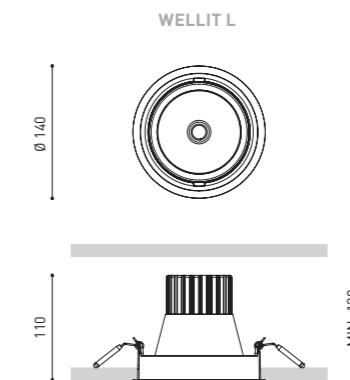
			P	CCT	BEAM	I	Flux	LOR
WELLIT L Tunable White	A382-02-18-	WT NT	21,5W	2700-5000K	12°	600mA	2300Lm	89%
	A382-02-28-	WT NT	21,5W	2700-5000K	21°	600mA	2300Lm	84%
	A382-02-38-	WT NT	21,5W	2700-5000K	43°	600mA	2300Lm	87%



∞	*OPTIONS
1	No DIM
2	DIM DALI
3	DIM Push

ACCESSORY

WELLIT L Anti-glare Honeycomb Louver *** A382-00-00
NOT SOLD SEPARATELY



COLOUR | WT □ RAL 9016 | NT ■ RAL 9005 | MATERIAL | AL | PC |

** DIM OPTIONS PLEASE CONSULT | *** ACCESSORY AFFECTS THE LIGHTING PARAMETERS

LEX ECO MINI

Lex Eco Mini is the reduced size version of Lex Eco. Consistent in its proportions, power and flow, it is a versatile and multipurpose luminaire, suitable for both domestic and contract projects.



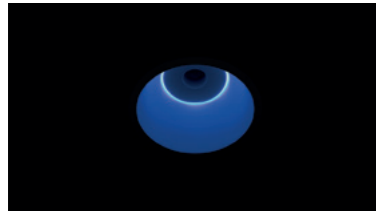
DESIGN PLUS
2012 AWARD



**Premios
Delta'12**
Δ
Selección



LEX ECO MINI & LEX ECO MINI BLUE ON



LEX ECO MINI BLUE OFF

			P	CCT	I	Flux	LOR
LEX ECO MINI 1	A378-01-10-	W R G Z WN N	6,5W	2700K	200mA	910Lm	70%
	A378-01-11-	W R G Z WN N	6,5W	3000K	200mA	940Lm	70%
	A378-01-12-	W R G Z WN N	6,5W	4000K	200mA	960Lm	70%
LEX ECO MINI Blue 1	A378-11-10-	W	6,5W	2700K	200mA	910Lm	70%
	A378-11-11-	W	6,5W	3000K	200mA	940Lm	70%
	A378-11-12-	W	6,5W	4000K	200mA	960Lm	70%
LEX ECO MINI 2	A378-02- ① -0-	W R G Z WN N	12W	2700K	350mA	1400Lm	70%
	A378-02- ① -1-	W R G Z WN N	12W	3000K	350mA	1460Lm	70%
	A378-02- ① -2-	W R G Z WN N	12W	4000K	350mA	1480Lm	70%
LEX ECO MINI Blue 2	A378-12- ① -0-	W	12W	2700K	350mA	1400Lm	70%
	A378-12- ① -1-	W	12W	3000K	350mA	1460Lm	70%
	A378-12- ① -2-	W	12W	4000K	350mA	1480Lm	70%

LED | 220-240 V~ | CE | IP20 | CRI>90 | L80B10 >60.000h

MacAdam Step 2 | CONNEC | OPTIONS* | INCL | Ø105 | 70°

①	*OPTIONS
1	No DIM
2	DIM DALI
3	DIM Push

ACCESSORY

LEX ECO High Chromatic LED **

NOT SOLD SEPARATELY



			P	CCT	I	Flux	LOR
LEX ECO MINI Tunable White	A378-00-28-	W R G Z WN N	10,5W	2700-5000K	600mA	1250Lm	70%
LEX ECO MINI Blue Tunable White	A378-10-28-	W	10,5W	2700-5000K	600mA	1250Lm	70%

LED | 220-240 V~ | CE | IP20 | CRI>90 | L80B10 >55.000h

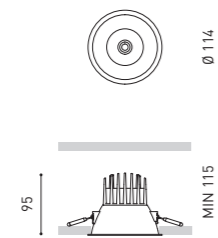
MacAdam Step 3 | CONNEC | DALI* | INCL | Ø105 | 71°

			P	CCT	I	Flux	LOR
LEX ECO MINI DIM to Warm	A378-00-29-	W R G Z WN N	11,5W	1800-3000K	350mA	1265Lm	70%
LEX ECO MINI Blue DIM to Warm	A378-10-29-	W	11,5W	1800-3000K	350mA	1265Lm	70%

LED | 220-240 V~ | CE | IP20 | CRI>90 | L80B10 >55.000h

MacAdam Step 3 | CONNEC | DALI* | INCL | Ø105 | 72°

LEX ECO MINI

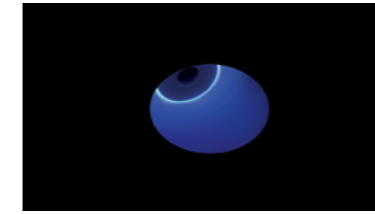


COLOUR | W | R | G | Z | WN | N | MATERIAL | AL | PC

* OTHER DIM OPTIONS PLEASE CONSULT
** ACCESSORY & COLOURS MAY AFFECT THE LIGHTING PARAMETERS



LEX ECO MINI ASYMMETRIC & MINI ASYMMETRIC BLUE ON



LEX ECO MINI ASYMMETRIC BLUE OFF

			P	CCT	I	Flux	LOR
LEX ECO MINI Asymmetric 1	A379-01-10-	W R G Z WN N	6,5W	2700K	200mA	910Lm	70%
	A379-01-11-	W R G Z WN N	6,5W	3000K	200mA	940Lm	70%
	A379-01-12-	W R G Z WN N	6,5W	4000K	200mA	960Lm	70%
LEX ECO MINI Asymmetric Blue 1	A379-11-10-	W	6,5W	2700K	200mA	910Lm	70%
	A379-11-11-	W	6,5W	3000K	200mA	940Lm	70%
	A379-11-12-	W	6,5W	4000K	200mA	960Lm	70%
LEX ECO MINI Asymmetric 2	A379-02- ① -0-	W R G Z WN N	12W	2700K	350mA	1400Lm	70%
	A379-02- ① -1-	W R G Z WN N	12W	3000K	350mA	1460Lm	70%
	A379-02- ① -2-	W R G Z WN N	12W	4000K	350mA	1480Lm	70%
LEX ECO MINI Asymmetric Blue 2	A379-12- ① -0-	W	12W	2700K	350mA	1400Lm	70%
	A379-12- ① -1-	W	12W	3000K	350mA	1460Lm	70%
	A379-12- ① -2-	W	12W	4000K	350mA	1480Lm	70%

LED | 220-240 V~ | CE | IP20 | CRI>90 | L80B10 >60.000h

MacAdam Step 2 | CONNEC | OPTIONS* | INCL | Ø105 | 64°

①	*OPTIONS
1	No DIM
2	DIM DALI
3	DIM Push

ACCESSORY

LEX ECO High Chromatic LED **

NOT SOLD SEPARATELY



			P	CCT	I	Flux	LOR
LEX ECO MINI Asymmetric Tunable White	A379-00-28-	W R G Z WN N	10,5W	2700-5000K	600mA	1250Lm	70%
LEX ECO MINI Asymmetric Blue Tunable White	A379-10-28-	W	10,5W	2700-5000K	600mA	1250Lm	70%

LED | 220-240 V~ | CE | IP20 | CRI>90 | L80B10 >55.000h

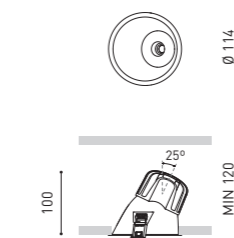
MacAdam Step 3 | CONNEC | DALI* | INCL | Ø105 | 64°

			P	CCT	I	Flux	LOR
LEX ECO MINI Asymmetric DIM to Warm	A379-00-29-	W R G Z WN N	11,5W	1800-3000K	350mA	1265Lm	70%
LEX ECO MINI Asymmetric Blue DIM to Warm	A379-10-29-	W	11,5W	1800-3000K	350mA	1265Lm	70%

LED | 220-240 V~ | CE | IP20 | CRI>90 | L80B10 >55.000h

MacAdam Step 3 | CONNEC | DALI* | INCL | Ø105 | 64°

LEX ECO MINI ASYMMETRIC



COLOUR | W | R | G | Z | WN | N | MATERIAL | AL | PC

* OTHER DIM OPTIONS PLEASE CONSULT
** ACCESSORY & COLOURS MAY AFFECT THE LIGHTING PARAMETERS



STRAM SURFACE MINI

Stram Surface has now a mini-sized version for those projects with smaller areas to be lighted, and its size adapts accordingly.



				P	CCT	I	Flux	LOR
STRAM SURFACE MINI 2	A377-02-10-	WT	NT	7W	2700K	500mA	975Lm	80%
	A377-02-11-	WT	NT	7W	3000K	500mA	1050Lm	80%
	A377-02-12-	WT	NT	7W	4000K	500mA	1075Lm	80%
STRAM SURFACE MINI 3	A377-03-Ⓞ-0-	WT	NT	10W	2700K	700mA	1275Lm	80%
	A377-03-Ⓞ-1-	WT	NT	10W	3000K	700mA	1375Lm	80%
	A377-03-Ⓞ-2-	WT	NT	10W	4000K	700mA	1400Lm	80%

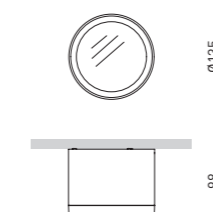
220-240 V~ | IP20 | CRI>90 | L80B10 >60.000h
 MacAdam Step 2
 OPTIONS*
 CONNEC
 FAST | CONNEC
 INCL
 100°

Ⓞ *OPTIONS

1	No DIM
5	DIM Phase Cut



STRAM SURFACE MINI



COLOUR | WT RAL 9016 | NT RAL 9005 | MATERIAL | AL | PMMA |

PRISMATIC DIFFUSER PLEASE CONSULT

» PLEASE CONSULT

RHINO

Rhino is a semi-recessed floor washlight, with direct light emission, that stands out from the wall so that, fictitiously, it refers to pressure from within the wall.





		P	CCT	I	Flux	LOR
RHINO	A351-00-10- WT NT	2W	2700K	700mA	190Lm	90%
	A351-00-11- WT NT	2W	3000K	700mA	205Lm	90%

LED | 220-240V~ | CE | IP20 | CRI>90 | L80B10 >60.000h |
 MacAdam Step 3 | INCL | Ø79 | 35° | 35°

		P	CCT	Flux	LOR
RHINO w/o Driver	A351-00-00- WT NT	1 / 2 / 3W	2700K	105 / 190 / 255Lm	90%
	A351-00-01- WT NT	1 / 2 / 3W	3000K	115 / 205 / 280Lm	90%

LED | CE | III | IP20 | CRI>90 | L80B10 >60.000h |
 MacAdam Step 3 | EXCL* | Ø79 | 35° | 35°

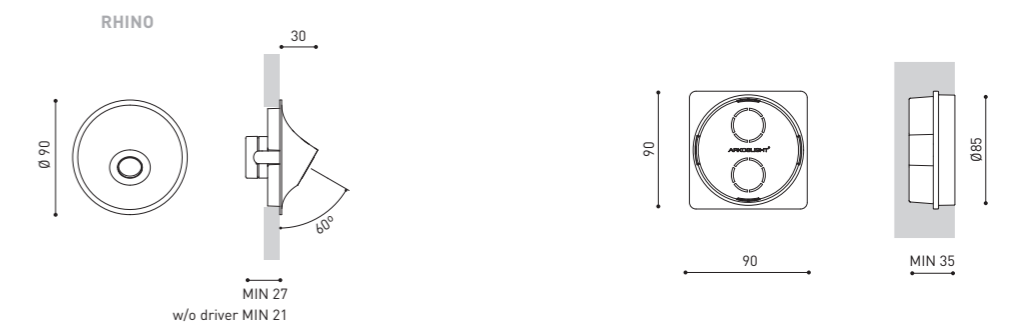
*DRIVER OPTIONS	P	I
0434-00-39	1W	350mA 1 to 12 Rhino
0434-00-40	2W	700mA 1 to 12 Rhino
0434-00-41	3W	1050mA 1 to 11 Rhino
0434-01-23	1W	350mA 1 to 20 Rhino
0434-01-25	2W	700mA 1 to 20 Rhino
0434-01-26	3W	1050mA 1 to 16 Rhino

DRIVER MUST BE PLACED ON REMOTE

ACCESSORY

RHINO Concrete Box Accessory A351-90-00

Only needed when installed in concrete walls. Boxes can be ordered in advance, in order to place the housings in the wall before the final Rhino installation.



COLOUR | WT □ RAL 9016 | NT ■ RAL 9005 | MATERIAL | AL | PC

» PLEASE CONSULT



WALLY

Wally is a floor washlight with geometrical shapes and architectural aesthetics. Sobriety, formal minimalism and homogeneous light distribution.



		P	CCT	I	Flux	LOR
WALLY	A353-00-10- W N	2,1W	2700K	250mA	260Lm	23%
	A353-00-11- W N	2,1W	3000K	250mA	270Lm	23%
	A353-00-12- W N	2,1W	4000K	250mA	290Lm	23%

220-240V~ |

 IP20 |
 CRI>90 |
 L80B10 >60.000h

 INCL |
 162 X 62 |
 73° |
 73°

		P	CCT	Flux	LOR
WALLY w/o Driver	A353-00-00- W N	2,1 / 3W	2700K	260 / 350Lm	23%
	A353-00-01- W N	2,1 / 3W	3000K	270 / 360Lm	23%
	A353-00-02- W N	2,1 / 3W	4000K	290 / 390Lm	23%

|

 IP20 |
 CRI>90 |
 L80B10 >60.000h

 EXCL* |
 162 X 62 |
 73° |
 73°

*DRIVER OPTIONS

	P	I		
NO DIM	0434-01-30	2,1W	250mA	1 to 3 Wally
	0486-04-35	3W	350mA	1 Wally
	0434-00-39	3W	350mA	1 to 4 Wally
DALI	0434-01-29	2,1W	250mA	1 to 3 Wally
	0434-00-79	3W	350mA	1 to 4 Wally

DRIVER MUST BE PLACED ON REMOTE

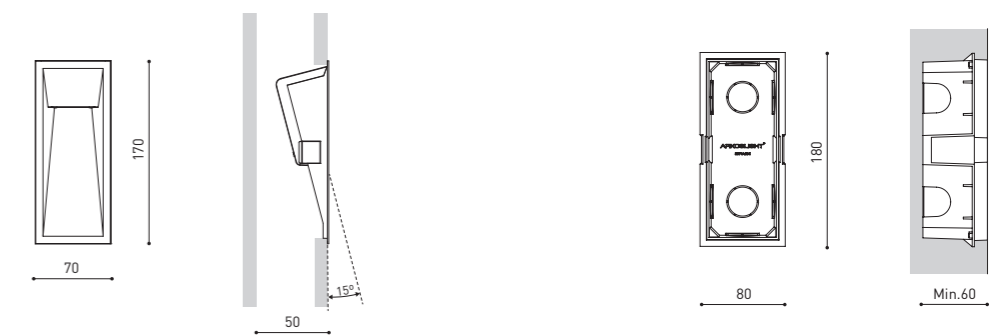
ACCESSORY

WALLY Concrete Box Accessory A353-90-00

Only needed when installed in concrete walls. Boxes can be ordered in advance, in order to place the housings in the wall before the final Wally installation.



WALLY



COLOUR | **W** RAL 9016 | **N** RAL 9005 | MATERIAL | AL | PC |

COLOURS MAY AFFECT THE LIGHTING PARAMETERS

» PLEASE CONSULT

UP_ DATES

HEREUNDER...



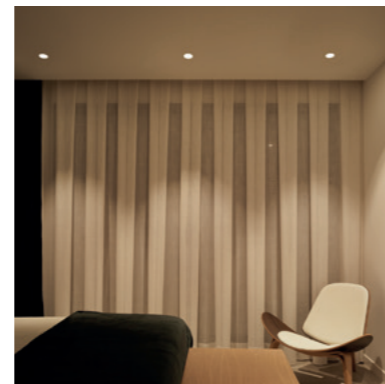
P. 082

New Colors
New metal finishing.



P. 092

New Puck Recessed IP
With protection code IP54.



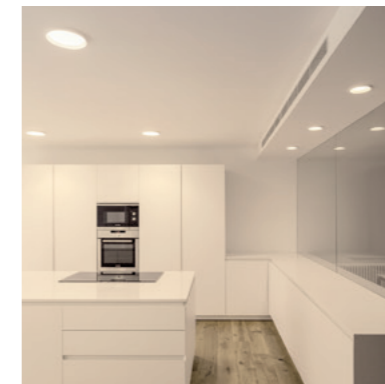
P. 094

Swap, more regulation options
And now, suitable for concrete ceilings.



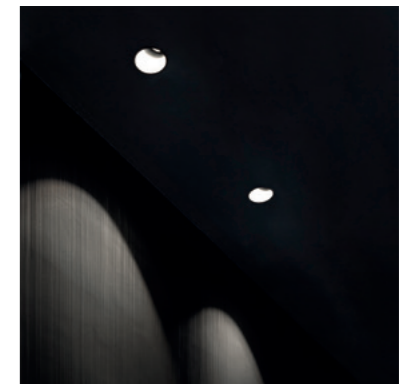
P. 096

Rec Mini, now DALI dimmable
For a more advanced control.



P. 098

Warm light
2700K in downlight range.



P. 100

Lex Eco even more technical
Dim to Warm and Tunable White technology.



P. 102

Spin
New colored supports.



P. 103

Salt Mini
New fastening system.



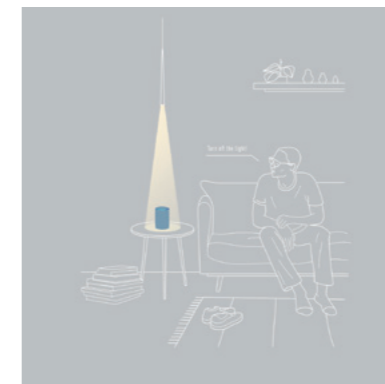
P. 104

Fit 65 1L
Available for single-phase tracks.



P. 106

Thor
New proportions.

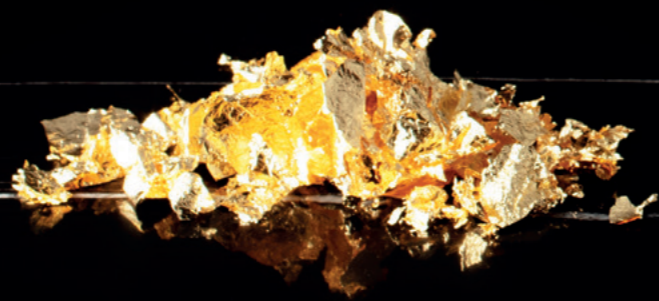


P. 108

ARK-Control
The light, under total control.

NEW
COLORS

Arkoslight incorporates Metallic Copper, Metallic Gold and Brushed Gold into its color and finishing catalogue. These new colors provide greater perceived quality, and transmit solidness, luxury, warmth and comfort.





AVAILABLE IN PRODUCTS



BLACK FOSTER
NMG | NTMG | WTMG



SHOT LIGHT
NMG | WMG*



PUCK
MG | MC



SPIN
MG | MC



ART
BG



HOLLY
MG | MC

New Colors

CODE Generator Example - Black Foster

Reference from *The 2019 Collection*

A319 10 10 XX

NEW FINISHINGS

NMG: Black Metallic Gold
NTMG: Textured Black Metallic Gold
WTMG: Textured White Metallic Gold

NEW FINISHINGS

BG: Brushed Gold
MG: Metallic Gold
MC: Metallic Copper
NTMG: Textured Black Metallic Gold
WTMG: Textured White Metallic Gold
NMG: Black Metallic Gold
WMG: White Metallic Gold*

* Not available in trimless version







Black Foster Recessed
CODE Generator Example

Reference from *The 2019 Collection*

A319 10 10 X

NEW BEZEL
N: Black
WN: White-Black

BLACK FOSTER

WHITE BEZEL

Black Foster Recessed, symmetric and asymmetric, is now available with white bezel.



NEW
PUCK
RECESSED IP

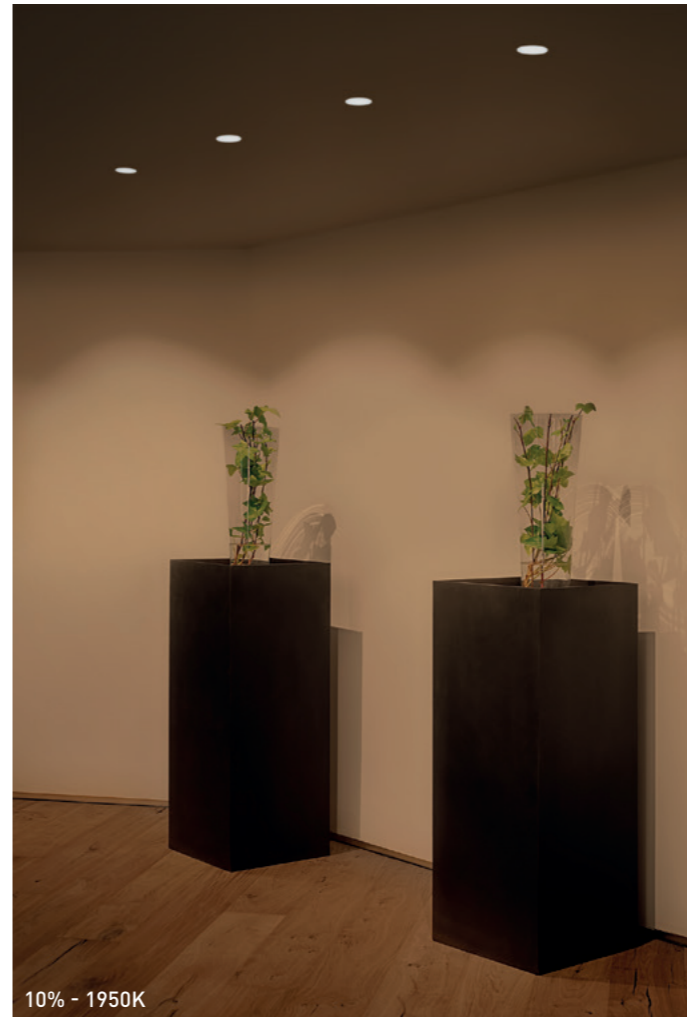
Puck Recessed is now resistant to the penetration of liquids and solid particles with protection code IP54.

Puck Recessed IP
CODE Generator Example

Reference from *The 2019 Collection*

A31X 00 10 WT

PRODUCT
3: PUCK Recessed
4: PUCK Recessed IP54



Swap DIM to WARM
CODE Generator Example

Reference from *The 2019 Collection*

A212 13 X9 W

DIM OPTIONS
2: Phase Cut
3: DALI | Push

SWAP

NOW SUITABLE FOR CONCRETE CEILINGS AND WITH NEW REGULATION OPTIONS FOR DIM TO WARM.

All the Swap Dim to Warm products are now available with phase-cut-dimming. Further, Swap can be requested with the new Flat Spring accessory, to be installed in concrete ceilings (in sizes M, L and XL).

Accessory
for concrete ceilings



SWAP Flat Spring Accessory

A212-00-00

FLAT SPRING NOT PRE-ASSEMBLED.
ISSUED ALONGSIDE THE FIXTURE, IN A SELF-INSTALLATION KIT.



REC MINI

NOW DALI DIMMABLE

Rec Mini is now available in a new dimming protocol (DALI), for more advanced control.



Rec Mini
CODE Generator Example

Reference from *The 2019 Collection*

A308 00 X0 WT

DIM OPTIONS

- 1: No DIM
- 2: DALI
- 3: Push



WARM LIGHT

The Arkoslight downlight range is updated with a new color temperature: 2700K.

PRODUCT	MODEL	P	CCT	I	Flux
DEEP	1	10,5W	2700K	350mA	1525Lm
DROP					
STRAM	2	15,5W	2700K	500mA	2100Lm
STRAM Prismatic					
MIX	3	22W	2700K	700mA	2800Lm
FOX					
	1	10,5W	2700K	350mA	1500Lm
	2	15,5W	2700K	500mA	2050Lm
FOX Mini					
	2	7W	2700K	500mA	925Lm
	3	10W	2700K	700mA	1200Lm
DEEP Mini					
DROP Mini	2	7W	2700K	500mA	975Lm
STRAM Mini					
STRAM Mini Prismatic					
MIX Mini	3	10W	2700K	700mA	1275Lm

DIM Options: 1: No DIM · 2: DIM Push · 4: DIM DALI

PRODUCT	MODEL	P	CCT	I	Flux
STRAM SURFACE	1	10,5W	2700K	350mA	1525Lm
	2	15,5W	2700K	500mA	2100Lm
	3	22W	2700K	700mA	2800Lm

DIM Options: 1: No DIM · 2: DIM DALI | Push

PRODUCT	MODEL	P	CCT	I	Flux
SALT	3	22W	2700K	700mA	2800Lm

DIM Options: 1: No DIM

PRODUCT	MODEL	P	CCT	I	Flux
SALT Mini	0	10W	2700K	700mA	1300Lm

DIM Options: 1: DIM Phase Cut

Downlights New 2700K
CODE Generator Example - Drop

Reference from *The 2019 Collection*

A193	0X	X0	WT
PRODUCT	MODEL	DIM	

LEX ECO

UPDATED TO BE EVEN MORE
TECHNICAL

Lex Eco is now sold in a new color temperature (2700K) and incorporates the Dim to Warm and Tunable White technology.

LEX ECO 2700K

A		C		P	CCT	I	Flux	LOR
0	SYMMETRIC	25		10W	2700K	300mA	1370Lm	70%
1	ASYMMETRIC	26		17W	2700K	500mA	2070Lm	70%
		27		17W	2700K	500mA	2070Lm	70%
		29		17W	2700K	500mA	2070Lm	70%
		30		24W	2700K	700mA	2690Lm	70%
		31		24W	2700K	700mA	2690Lm	70%
		33		24W	2700K	700mA	2690Lm	70%

OTHER DIM OPTIONS PLEASE CONSULT

LEX ECO New 2700K CODE Generator Example

Reference from *The 2019 Collection*

A07X XX XX W
A B C

LEX ECO Tunable White & DIM to WARM

A		B		P	CCT	I	Flux	LOR
8	SYMMETRIC	01		21,5W	2700-5000K	600mA	2300Lm	70%
9	ASYMMETRIC	11		21,5W	2700-5000K	600mA	2300Lm	70%
		02		20W	1800-3000K	600mA	2150Lm	70%
		12		20W	1800-3000K	600mA	2150Lm	70%

Lex Eco New Tunable White & DIM to WARM CODE Generator Example

New references

A36X XX 00 W
A B



OTHER DIM OPTIONS PLEASE CONSULT



New Spin 2700K
CODE Generator Example

Reference from *The 2019 Collection*

A222 02 0X WT

COLOR TEMPERATURE

- 0: 2700K
- 1: 3000K
- 2: 4000K*

* NOT AVAILABLE FOR SPIN 48V TRACK

SPIN

NOW IN 2700K, AND WITH NEW
COLORED WIRES

Spin is now available in warm color temperature (2700K). The finishing of its supply-tensioner is also modified. It is no longer transparent but it comes in an elegant black or white color, according to the finishing of the piece.

Private residence, Valencia (Spain) | Design: Leticia Vila & Vicente Olivares



SALT MINI

NEW FASTENING SYSTEM

Salt Mini has modified the layout of its three tensioners, which are now anchored in the rosette instead of to the ceiling. It thus becomes easier to install.



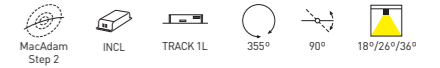
FIT 65 1L

The Fit spotlight, in its 65 version, widens its possibilities and now also available for single-phase tracks.



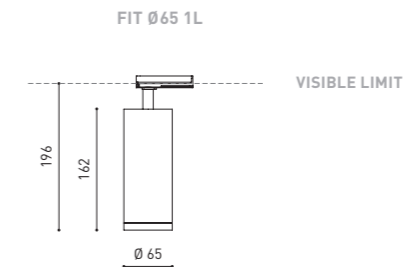
		P	CCT	Beam	I	Flux	LOR
FIT Ø65 1L	A366-01-11- WT NT	10,3W	3000K	18°	300mA	1300Lm	90%
	A366-01-12- WT NT	10,3W	4000K	18°	300mA	1320Lm	90%
	A366-01-21- WT NT	10,3W	3000K	26°	300mA	1300Lm	88%
	A366-01-22- WT NT	10,3W	4000K	26°	300mA	1320Lm	88%
	A366-01-31- WT NT	10,3W	3000K	36°	300mA	1300Lm	84%
	A366-01-32- WT NT	10,3W	4000K	36°	300mA	1320Lm	84%

LED | 220 V~ | CE | IP20 | CRI>90 | L80B10 >60.000h



ACCESSORY

FIT Ø65 Anti-glare Honeycomb Louver ** A356-00-00
NOT SOLD SEPARATELY



COLOUR | WT □ RAL 9016 | NT ■ RAL 9005 | MATERIAL | AL | PC |

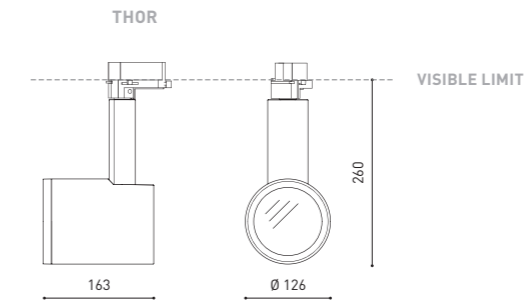
** ACCESSORY AFFECTS THE LIGHTING PARAMETERS



		P	CCT	I	Flux	LOR
THOR 1	A226-11- Ⓞ -1- WT NT	27W	3000K	800mA	3750Lm	90%
	A226-11- Ⓞ -2- WT NT	27W	4000K	800mA	3820Lm	90%
THOR 2	A226-21- Ⓞ -1- WT NT	36W	3000K	1050mA	4750Lm	90%
	A226-21- Ⓞ -2- WT NT	36W	4000K	1050mA	4820Lm	90%
DALI	A226-24- Ⓞ -1- WT NT	36W	3000K	1050mA	4750Lm	90%
	A226-24- Ⓞ -2- WT NT	36W	4000K	1050mA	4820Lm	90%

LED | 220 V~ | CE | IP20 | CRI>90 | L80B10 >60.000h

MacAdam Step 2 | INCL | TRACK 3L | 325° | 90° | 17° / 28° / 40°



Ⓞ	BEAM OPTIONS
1	17°
2	28°
3	40°

ACCESSORIES

TRACKLIGHT Surface Adapter

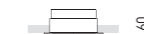
0000-55-43-	W
0000-55-39-	N



NO DIM

TRACKLIGHT Recessed Adapter

0000-55-44-	W
0000-55-40-	N



NO DIM | 9105

THOR High Chromatic Led*

NOT SOLD SEPARATELY



THOR Anti-glare Screen*

0802-00-00-	WT
0802-00-00-	NT



THOR Anti-glare Honeycomb Louver*

0802-02-00

NOT SOLD SEPARATELY



THOR Elliptical Refractor*

0802-04-00

NOT SOLD SEPARATELY



THOR Beam Mixer Diffuser*

0805-03-00

NOT SOLD SEPARATELY



COLOUR | WT □ RAL 9016 | NT ■ RAL 9005 | MATERIAL | AL | GL-TRANS |

OTHER CCT PLEASE CONSULT | * AFFECTS THE LIGHTING PARAMETERS

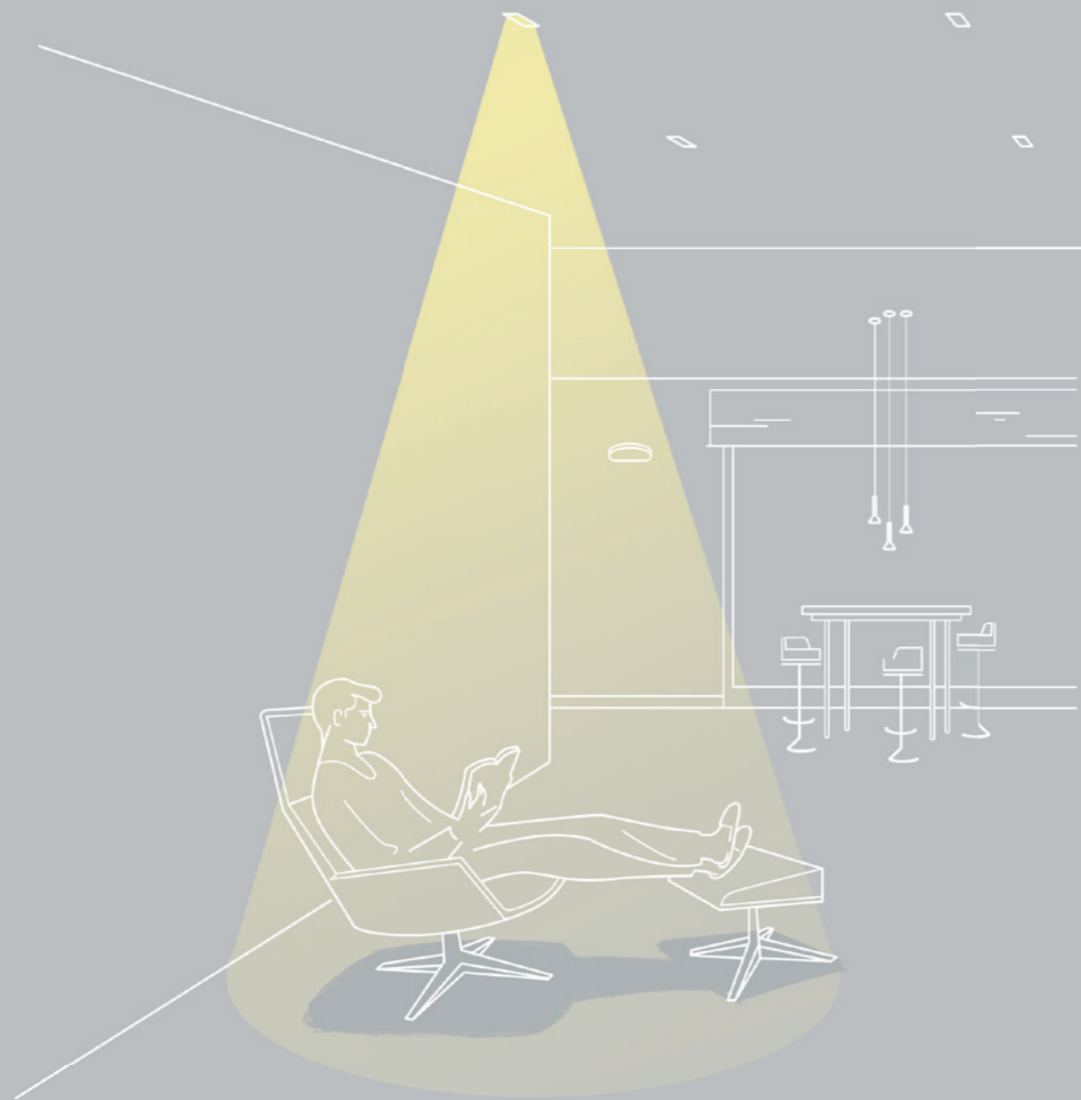
PLEASE CONSULT

THOR

NEW PROPORTIONS

Thor reduces the length of its arm by 30mm, thanks to the optimization of the driver's size. Better proportions and harmony for Arkoslight's most powerful spotlight.





NEW

ARK-CONTROL SYSTEM

ARK-Control is a wireless system that enables us to interact with our installation, creating a much more versatile lighting scheme.

Totally compatible with traditional on/off systems, we can programme automations that adapt to our space distributions or routines.

INDIVIDUAL/GROUP CONTROL

Individually control or group luminaires together, so they can quickly and simply undertake joint light functions.

SCENES

Design light scenes for different activities: working, watching a film, a romantic date....

The set configurations will control the luminaires to reproduce the desired atmosphere, depending on the occasion.

ANIMATIONS

Create dynamic atmospheres to generate changes from one scene to another.

TIME PROGRAMMING

Establish a routine so that the light interacts with the space, depending on your personal timetable.

'SMART' TECHNOLOGY

ARK-Control takes advantage of the technical potential of our luminaires, especially those with *Dim to Warm* and *Tunable White* technology. The system permits configuring the correct light colour temperature and intensity to adapt to human needs in interior spaces. We can convert the space into a dynamic environment thanks to the active role of the light. All of this can be done easily from our device.

SUNRISE & SUNSET SCHEDULE

ARK-Control analyses the time of sunrise and sunset -according to our location obtained by GPS- to achieve optimal light control throughout the whole day. This functionality can be combined with natural light sensors, to take advantage of the sunlight and favour energy saving.

ARK-CONTROL, TURN THE LIGHTS ON!

Control the luminaries with voice orders using virtual assistants such as Alexa or others.

0434-00-31



Ark-Control 1-10V / DALI

Wireless control unit for LED power supplies with 0-10V, 1-10V or DALI dimming interface.

0434-00-34



Ark-Control Dimmer

Bluetooth control for phase cut-off adjustable LED power supplies.

0433-10-25



Ark-Control Passive

Bluetooth controller for DALI networks in broadcast mode –all luminaires controlled at the same time-. It does not have its own DALI power supply, so it is supplied directly from a DALI bus.

0434-01-07



Ark-Control Sensor

Wireless control sensor depending on the ambient light and presence detection.

0434-00-35 | W | N |



Ark-Control User Interface W | N

Wireless user interface that can be configured using the Casambi application.

The four destination buttons can control a scene, an animation, a luminaire or a group of them –according to the configuration desired by the user-.

434-01-45	350 mA
434-01-46	500 mA
434-01-47	700 mA
434-01-48	1050 mA



Ark-Control Driver

60W power supply with built-in Bluetooth wireless interface.

434-01-49	350 mA
434-01-50	500 mA
434-01-51	700 mA
434-01-52	1050 mA



Ark control Zigbee driver

60W power supply with Zigbee interface.

0434-01-38



Ark control Zigbee interface

Zigbee controller for luminaires with DALI power supplies. Control of up to 8 DALI luminaires. Compatible with Tunable White.

0434-01-31 | N |



Adapter for Wireless Control. Double Compatibility

ARK-Control Ready:

Compatible with Casambi technology. It controls up to 4 groups of luminaires (on the same track).

A.A.G. Stucchi LightControl Ready:

Compatible with the A.A.G. Stucchi LightControl APP. It individually controls up to 64 luminaires (on the same track).